



**BONE CLONES, INC.**  
OSTEOLOGICAL REPRODUCTIONS



Catalog of  
PRODUCTS  
**2020**



ANATOMY • ZOOLOGY

BIOARCHAEOLOGY • PALEONTOLOGY

ANTHROPOLOGY • PRIMATOLOGY • MAMMALS • REPTILES • AMPHIBIANS • BIRDS • INVERTEBRATES

**BONE CLONES**  
INCORPORATED  
OSTEOLOGICAL  REPRODUCTIONS

This catalog is an all-in-one presentation of Bone Clones products, organized by categories, sub-categories, and synchronized with the format of our website: [www.boneclones.com](http://www.boneclones.com)

With economy and conservation in mind, we have opted for a compact version of our catalog, which will list all products, but limit the photographs and graphic portions. By accessing our website you will be able to see photos and descriptions of each item.

We continually introduce new educational ideas and products on our website, and keep you informed of developments via monthly newsletters and social media.

From the beginning, our mission has been to produce osteological reproductions that are virtually indistinguishable from the original. Known for detail, outstanding quality, and durability, Bone Clones® have been instrumental in the choice that is now available between natural bone and replicas for hands-on learning.

Of great value to educators in classrooms and museums worldwide, we produce an extensive selection of skull and skeleton casts that may be instructive in disciplines from anatomy to zoology.



**Dave Kronen**  
Co-Founder, Bone Clones, Inc.

All Bone Clones® products in this catalog are produced and handmade by Bone Clones, Inc. in the USA and are protected under State, Federal and International trademark laws. Photographs, text, descriptions or casts cannot be reproduced without the written consent of Bone Clones, Inc. Please note that prices are subject to change without notice.

# BONE CLONES INCORPORATED OSTEOLOGICAL REPRODUCTIONS

Please visit our website for complete listings and up-to-date pricing. At the top of our homepage you will find a series of categories, and within them subcategories, to choose from.



All Zoological Items



All Human Anatomy



All Paleontology

Order on our website: [www.boneclones.com](http://www.boneclones.com)

Order by phone: 818-709-7991 or 800-914-0091 (USA customers only)

Order by Fax: 818-709-7993 Order by e-mail: [order@boneclones.com](mailto:order@boneclones.com)

Order by mail: Bone Clones, Inc. • 9200 Eton Ave.

Chatsworth, CA 91311 • U.S.A.

## Payment:



We accept Pay Pal, American Express, Visa, Mastercard, and Discover.

Educational institutions can fax, mail or e-mail us your Purchase Order.

E-mail: [sales@boneclones.com](mailto:sales@boneclones.com)

## Domestic Ground Charges:

(Additional charges apply to Hawaii and Alaska)

Up to \$50 .....	\$11.00	\$201 to \$250.....	\$22.00
\$51 to \$100.....	\$13.00	\$251 to \$300.....	\$26.00
\$101 to \$150.....	\$19.00	\$301 to \$400.....	\$31.00
\$151 to \$200.....	\$20.00	Over \$400..	8% of order

**Additional charges may apply for items of oversized dimension.**

While our product line continues to grow, we have reduced the number of catalog pages and printed on recycled paper in our efforts to be eco-friendly. Please see our website for additional photographs and information.

We will be happy to quote you shipping charges for items that require special crating and shipping.

## Rush orders:

For expedited 2 day air service add \$20.00 to above charges.

For next day air service add \$38.00.

## International Orders:

Shipping charges depend on size, weight and the level of service. We will quote you the shipping and handling charges.

Please note that there may be additional charges in the recipient country such as customs duties, VAT taxes, etc., which are the responsibility of the recipient. Our commercial invoice indicates that Bone Clones® are educational products and in some instances this can impact the charges favorably.

## TABLE OF CONTENTS

### About Pages:

Quality .....	C, 25, 36
Our Skeletons .....	D
Veterinary Osteology .....	E
Educational Handouts.....	9
Mammalian Flight.....	11
Fields of Study .....	14, 15
Bioarchaeology .....	15
Terrestrial Vertebrate Locomotion .....	19
Exhibits.....	25
Osteological Evaluation Reports .....	37

### Birds, Eggs.....2-4

### Mammals: Non-primate .....5-11

Marine & Egg Laying, Dogs, Cats (Fossil & Modern), Giraffe, Rhino, Hippo, Economy, Rodents, Marsupials, Miscellaneous Mammals, Horse Bears, Small Mammals, Mammal Teeth	
--	--

### Economy Series..... 6, 8, 24

### Claws & Talons .....12

Bird, Reptile, Fossil, Mammal

### Reptile & Amphibian.....13

### Sharks, Rays, Fish.....13

### Mammals:

### Primate Non-human ..... 14-23

Great Apes (Fetal and Adult), New  
World Monkeys, Old World Monkeys,  
Prosimians: Skulls, Skeletons, Cranial,  
Postcranial, Life Casts, & Sets

### Hominids .....24-33

Skulls, Skeletons, Sets, Lesson  
Plans, Postcranial, Tools

### Life Casts.....3, 13, 21

### Scale & Sculpture.....33

### Human ..... 34-45

Pathology & Trauma; Adult,  
Adolescent, Child, Fetal: Skulls,  
Skeletons, Cranial, Postcranial, Life  
Casts, & Sets; Basic and Advanced  
Anatomy, Forensic Osteology

### K-12..... 19, 30, 33

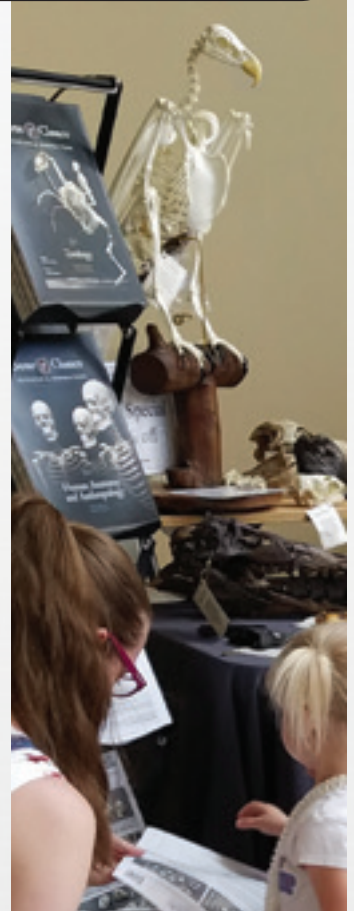
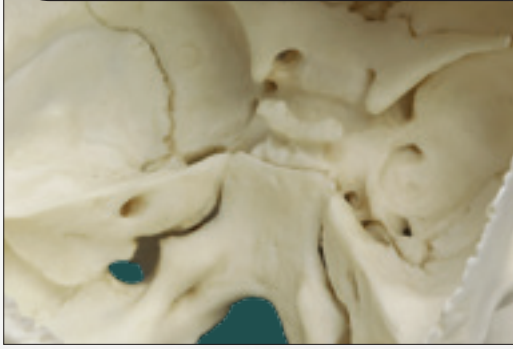
### Index .....46, 47

B



1-800-914-0091

## Bone Clones® – Quality for Hands-on Learning™



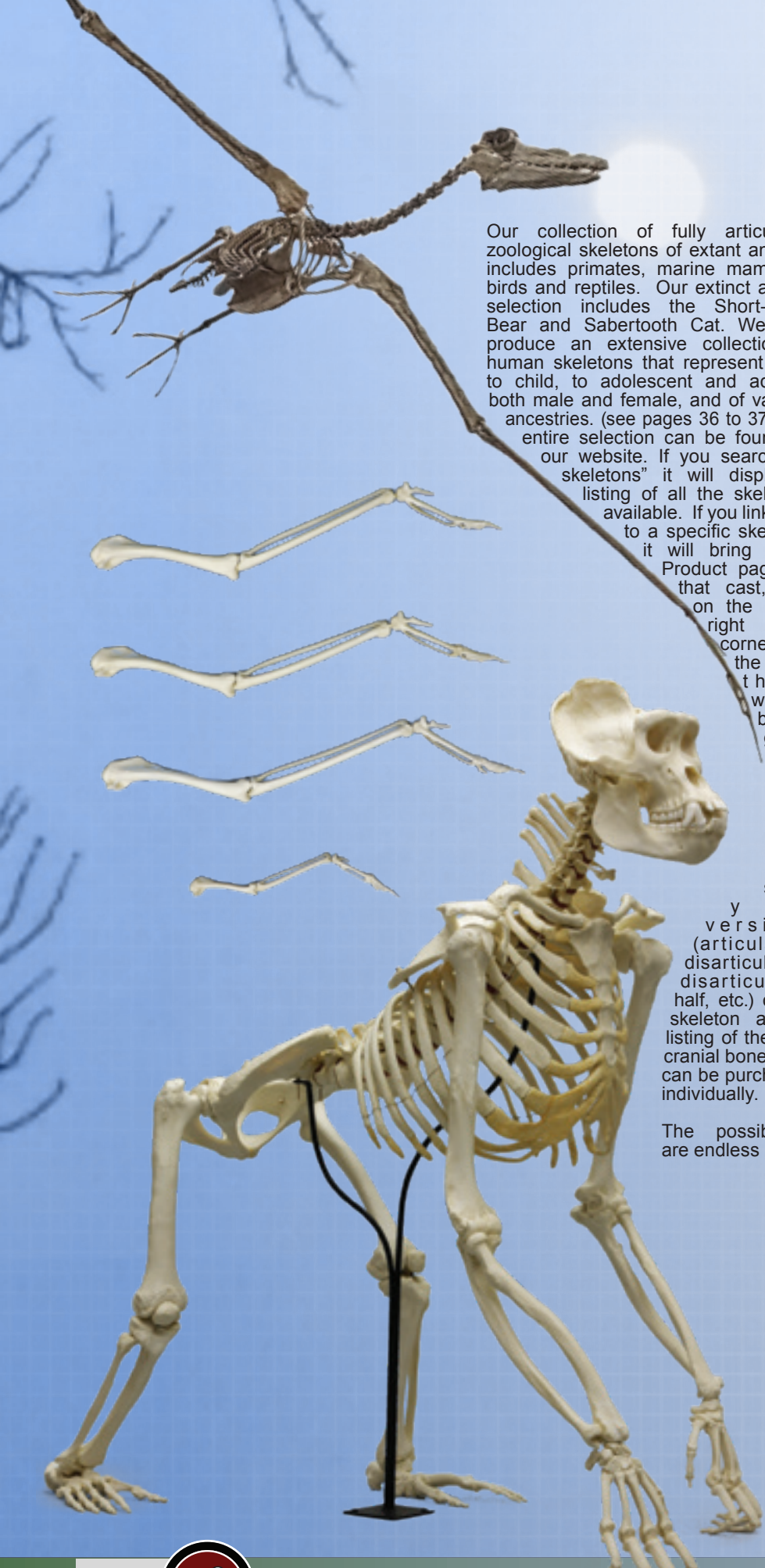
### Bone Clones® Quality



**W**hether for exhibit or for detailed study of human or animal anatomy of extinct or extant species, Bone Clones® are the best osteological reproductions available. Cast from diverse originals licensed to us from museums and universities, our product selection encompasses many fields of study: from anatomy to zoology—with anthropology, archaeology, biology, forensics, paleontology, and primatology in between—you will only find this expansive product line at Bone Clones, Inc.

One important component to our success is our dedicated staff: from the informed ideas that go into developing new products, to creating molds and manufacturing casts, to quality control and careful packaging, many individuals are dedicated to achieving outstanding results for our product. Equal dedication is from the fine artists on board who create our catalog and continually manage our website. Lastly, our excellent customer service staff is unequalled in their commitment to our customers by e-mail, phone and in-person.

# ZOOLOGICAL SKELETONS



Our collection of fully articulated zoological skeletons of extant animals includes primates, marine mammals, birds and reptiles. Our extinct animal selection includes the Short-faced Bear and Sabertooth Cat. We also produce an extensive collection of human skeletons that represent fetal, to child, to adolescent and adult – both male and female, and of varying ancestries. (see pages 36 to 37) The entire selection can be found on our website. If you search “all skeletons” it will display a listing of all the skeletons available. If you link/click to a specific skeleton, it will bring up a Product page for that cast, and on the upper right hand corner of the page, there will be a group page tab. That tab will open to show you versions (articulated, disarticulated, disarticulated half, etc.) of the skeleton and a listing of the post cranial bones that can be purchased individually.

The possibilities are endless ....

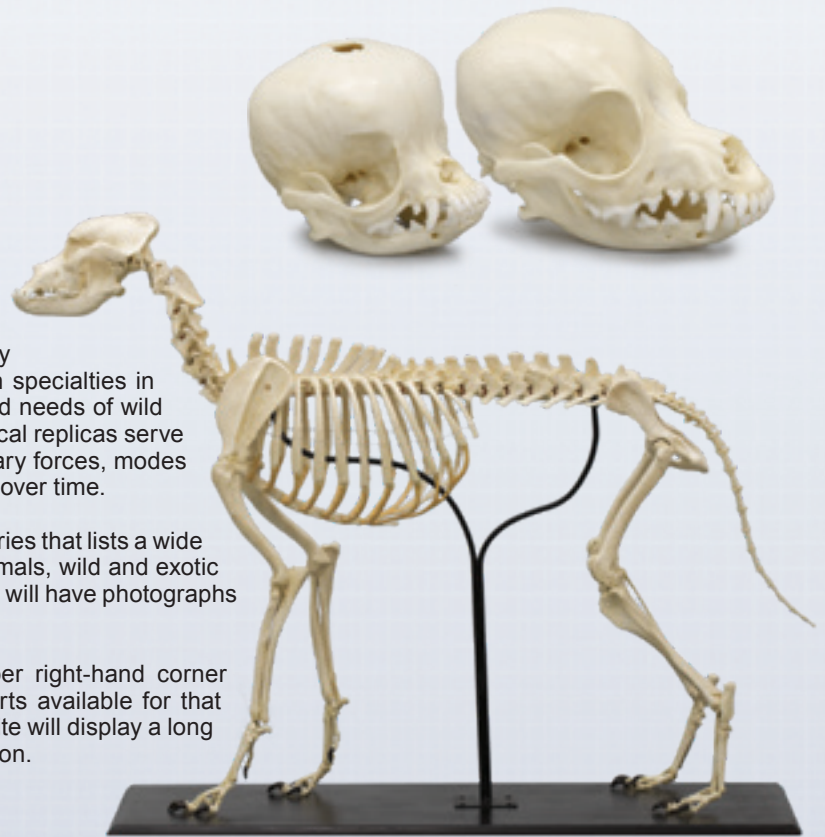
- ALBATROSS
- AYE-AYE
- BALD EAGLE
- BLACK SPIDER MONKEY
- BONOBO
- BROWN KIWI
- CHIMPANZEE
- DOG
- DOLPHIN
- ELEPHANT BIRD
- FLYING LEMUR
- FOSSIL DUGONG
- GOLDEN EAGLE
- GOLIATH FROG
- GORILLA
- GREATER FLYING FOX
- HARPY EAGLE
- HORSE
- INDRI LEMUR
- KOMODO DRAGON
- MANATEE
- MANDRILL BABOON
- ODONTOPTERYX GIGAS
- ORANGUTAN
- PLATYPUS
- RAVEN
- RHESUS MACAQUE
- SHORT-FACED BEAR
- SIAMANG
- VERVET MONKEY
- WEeping CAPUCHIN
- XENOSMILUS SABERTOOTH
- SMILODON SABERTOOTH

# VETERINARY OSTEOLOGY

We commonly think of veterinarians as doctors that only treat our household pets. Yet, the field of veterinary medicine covers the entire zoological spectrum, with specialties in the treatment of large animals, and for the specialized needs of wild and captive species from around the world. Osteological replicas serve to aid in the study of comparative anatomy, evolutionary forces, modes of locomotion, and adaptations that have taken place over time.

Our website features veterinary and zoological categories that lists a wide selection of skulls and skeletons of domesticated animals, wild and exotic animals, and endangered species. Each product page will have photographs and information about each cast offered.

The skeleton pages have a "group" tab in the upper right-hand corner that links to a page listing the many post-cranial parts available for that specimen. A search of "endangered species" on our site will display a long list of species that are designated as needing protection.



SC-344-A Large Dog Skeleton.  
(Wood Base Sold Separately)





### Birds of Prey (Raptor) Skeletons

SC-043-A	Harpy Eagle, Articulated.....	\$ 1,850
SC-043-D	Disarticulated.....	\$ 1,450
SC-068-A	Bald Eagle, Articulated .....	\$ 1,990
SC-068-D	Disarticulated.....	\$ 1,590
SC-073-A	Golden Eagle, Articulated.....	\$ 1,990
SC-073-D	Disarticulated.....	\$ 1,590

### Flightless Bird (Ratite) Skeletons

SC-165-A	Kiwi, Articulated on Stand and Base, with Egg.....	\$ 1,035
SC-241-A	Elephant Bird, Articulated .....	\$ 18,000
SC-241-D	Disarticulated.....	\$ 14,400

### Perching Bird (Passerine) Skeletons

SC-074-A	Raven, Articulated, Resting .....	\$ 1,490
SC-074-AF	Articulated, Flying .....	\$ 1,490
SC-074-D	Disarticulated .....	\$ 990

### Soaring Seabird Skeletons

SC-332-A	Black-footed Albatross, Articulated....	\$ 1,795
SC-332-D	Disarticulated ...	\$ 1,350

### Individual Claws & Talons

KO-004	Great Horned Owl.....	\$ 10
KO-020	Golden Eagle.....	\$ 12
KO-021	Bald Eagle.....	\$ 10.50
KO-022	Red-tailed Hawk .....	\$ 10.50
KO-023	Raven .....	\$ 10.50
KO-029	Peregrine Falcon .....	\$ 10.50
KO-065	Barn Owl.....	\$ 7.50
KO-243C	Harpy Eagle .....	\$ 12

### Birds of Prey (Raptor) Skulls

BC-043	Harpy Eagle .....	\$ 175
BC-068	Bald Eagle.....	\$ 149
BC-072	Great Horned Owl.....	\$ 124
BC-073	Golden Eagle .....	\$ 145
BC-077	California Condor .....	\$ 150
BC-078	Red-tailed Hawk .....	\$ 140
BC-096	Peregrine Falcon .....	\$ 149
BC-153	Barn Owl.....	\$ 125
BC-154	Barred Owl.....	\$ 134
BC-155	Burrowing Owl .....	\$ 125
BC-166	Osprey .....	\$ 145
BC-221	Kori Bustard.....	\$ 155
BC-242	American Kestrel .....	\$ 135
BC-245	Short-eared Owl.....	\$ 130
BC-297	Andean Condor .....	\$ 155
BC-337	Griffon Vulture.....	\$ 155
BC-350	Northern Crested Caracara .....	\$ 165
BC-351	Snowy Owl .....	\$ 135

### Claw & Talon Sets



KO-024	Set of 6 Raptor Talons .....	\$ 57
KO-100-BIRDS	Set of 8 Bird Talons in Riker Box .....	\$ 110
KO-100-SET-31	Set of 31 Claws in Riker Box .....	\$ 385



# BIRD SKULLS, SETS, WINGS, LEGS & FEET



## Other Bird Skulls

BC-029	Hyacinth Macaw .....	\$ 180
BC-062	Penguin .....	\$ 175
BC-065	American White Pelican .....	\$ 170
BC-074	Raven .....	\$ 135
BC-075	Crow .....	\$ 134
BC-112	Pileated Woodpecker .....	\$ 130
BC-134	Sandhill Crane .....	\$ 150
BC-151	Ruby-throated Hummingbird.....	\$ 78
BC-161	Great Blue Heron.....	\$ 165
BC-162	Horned Puffin.....	\$ 165
BC-165	Kiwi .....	\$ 160
BC-167	Northern Cardinal .....	\$ 95
BC-168	American Robin.....	\$ 98
BC-169	Yellow-billed Cuckoo .....	\$ 98
BC-170	Blue Jay .....	\$ 98
BC-171	Common Snipe .....	\$ 92
BC-173	Toco Toucan.....	\$ 185
BC-174	Wreathed Hornbill .....	\$ 185
BC-175	Black Hornbill .....	\$ 185
BC-176	Scarlet Ibis .....	\$ 155
BC-177	Roseated Spoonbill .....	\$ 155
BC-192	Sacred Ibis .....	\$ 155
BC-240	Yellow-billed Magpie .....	\$ 99
BC-241	Elephant Bird .....	\$ 375
BC-243	Road Runner .....	\$ 132
BC-244	Glaucous Gull.....	\$ 145
BC-254	Secretary Bird .....	\$ 155
BC-306	Flamingo.....	\$ 155
BC-306-N	Flamingo Skull and Neck .....	\$ 340
BC-310	Scarlet Macaw .....	\$ 170
BC-332	Black-footed Albatross .....	\$ 155
BC-335	Black-browed Albatross.....	\$ 155
BC-338	Cassowary.....	\$ 195
BC-352	Yellow-billed Stork .....	\$ 175

## Bird Sets



<b>BC-331-BIRD-SET 5</b>	
Comparative Bird Skulls Set of 5: Northern Cardinal, Red-tailed Hawk, Ruby-throated Hummingbird, Pileated Woodpecker, Crow.....	
	\$ 459
<b>BC-330-BIRD-SET 3</b>	
Comparative Bird Skulls Set of 3: Northern Cardinal, Red-tailed Hawk, Ruby-throated Hummingbird .	
	\$ 249
BC-029-SET	Hyacinth Macaw (Skull, Foot) .....
	\$ 295
BC-068-SET	Bald Eagle Set (Skull, Egg, Talon).....
	\$ 178
BC-072-SET	Great Horned Owl (Skull, Egg, Talon).....
	\$ 145
BC-073-SET	Golden Eagle (Skull, Egg, Talon) .....
	\$ 174
BC-078-SET	Red-tailed Hawk (Skull, Egg, Talon) .....
	\$ 164
BC-096-SET	Peregrine Falcon (Skull, Egg, Talon).....
	\$ 176
BC-151-SET	Ruby-throated Hummingbird
	(Skull, Egg, Egg Stand) .....
	\$ 91
BC-153-SET	Barn Owl (Skull, Egg, Talon) .....
	\$ 145
BC-243-SET	Road Runner (Skull, Foot).....
	\$ 155
SC-074-ARCH	Medium Bird Archaeology Set .....
	\$ 95

## Bird Wings - articulated (no feathers)

SC-043-67-A	Harpy Eagle .....	\$ 135
SC-068-67-A	Bald Eagle.....	\$ 135
SC-073-67-A	Golden Eagle .....	\$ 135
SC-074-67-A	Raven Wing, .....	\$ 135
SC-241-67-A	Elephant Bird .....	\$ 85
SC-332-67-A	Black-footed Albatross .....	\$ 135

## Bird Legs - articulated

KO-243	Harpy Eagle .....	\$ 190
SC-068-75-A	Bald Eagle.....	\$ 190
SC-073-75-A	Golden Eagle .....	\$ 190

## Fossil Bird Egg and Stand

KO-241-S	Display Stand for Elephant Bird Egg ....	\$ 550
KO-241-SE	Elephant Bird Egg and Stand .....	\$ 735

## Raven Leg Bones

SC-074-21	Raven Femur.....	\$ 30
SC-074-TT	Raven Tibiotarsus .....	\$ 30
SC-074-TM	Raven Tarsometatarsus .....	\$ 30

## Bird Feet - articulated

KO-138	California Condor Foot.....	\$ 148
KO-139	Hyacinth Macaw Foot.....	\$ 148
KO-203-B	Ostrich Foot on Base .....	\$ 155

## Wattled Crane Leg Life Casts

KO-134	Wattled Crane Leg .....	\$ 205
KO-134-H	Wattled Crane Half Leg .....	\$ 140

# North American Bird Egg Set



As with all Bone Clones products, only the finest casting materials are used to cast our egg series. Our expert artists paint each with meticulous care to match the eggs that were used in the casting process. Each egg is hand painted with permanent dyes and sealed with a resistant coating that makes it ideal for handling, study, teaching, as well as for display. In nature, eggs vary from region to region as well as from bird to bird. The colors and patterns used were determined by the egg used as well as reference material to find a happy medium that would be representative of the species.

A set of 36 eggs, consisting of four product numbers KO-401 through KO-436. All eggs are shipped unmounted, each with its own acrylic display stand (Pictured).  
**KO-400.....\$845**



- KO-411 Golden Eagle** 2 ¼" W, 3" H.....\$36
- KO-417 Canada Goose** 2 ¼" W, 3 ¼" H.....\$32
- KO-405 Whooping Crane** 2 ½" W, 3 ¾" H.....\$38
- KO-424 Common Loon** 2" W, 3 ⅛" H.....\$34
- KO-410 Bald Eagle** 2 ¼" W, 3" H.....\$36
- KO-418 Red-tailed Hawk** 1 ¾" W, 2 ¼" H.....\$31
- KO-419 Great Blue Heron** 1 ¾" W, 2 ½" H.....\$27
- KO-412 Great Egret** 1 ¾" W, 2 ¼" H.....\$29
- KO-435 Wild Eastern Turkey** 1 ¾" W, 2 ⅝" H.....\$36
- KO-432 Osprey** 1 ¾" W, 2 ⅜" H.....\$38
- KO-429 Great Horned Owl** 1 ¾" W, 2" H.....\$27
- KO-431 Snowy Owl** 1 ⅝" W, 2" H.....\$26
- KO-413 Peregrine Falcon** 1 ¾" W, 2" H.....\$34
- KO-409 Mallard Duck** 1 ½" W, 2 ¼" H.....\$29
- KO-428 Barn Owl** 1 ⅝" W, 1 ⅝" H.....\$26
- KO-408 Rock Dove** 1 ¼" W, 1 ½" H.....\$22
- KO-406 American Crow** 1 ¼" W, 1 ½" H.....\$24
- KO-430 Eastern Screech Owl** 1 ¼" W, 1 ⅝" H.....\$23
- KO-422 American Kestrel** 1" W, 1 ⅜" H.....\$23
- KO-423 Killdeer** 1" W, 1 ⅝" H.....\$24
- KO-407 Mourning Dove** ¾" W, 1 ¼" H.....\$20
- KO-434 Whip-poor-will** ¾" W, 1" H.....\$21
- KO-420 Blue Jay** ¾" W, 1" H.....\$20
- KO-415 Northern Flicker** ¾" W, 1" H.....\$24
- KO-433 European Starling** ¾" W, 1" H.....\$21
- KO-402 Northern Cardinal** ¾" W, 1" H.....\$20
- KO-425 Western Meadowlark** ¾" W, 1" H.....\$20
- KO-427 American Robin** ¾" W, 1" H.....\$21
- KO-421 Western Scrub-Jay** ¾" W, 1" H.....\$20
- KO-401 Eastern Bluebird** ¾" W, 1" H.....\$20
- KO-426 Northern Mockingbird** ¾" W, 1" H.....\$21
- KO-404 Brown-headed Cowbird** ¾" W, 1" H.....\$22
- KO-403 Gray Catbird** ¾" W, 1" H.....\$21
- KO-414 House Finch** ½" W, ¾" H.....\$20
- KO-436 House Wren** ½" W, ⅝" H.....\$21
- KO-416 American Goldfinch** ½" W, ¾" H.....\$20

All photographs © Bone Clones, Inc.



**Turkey Vulture**  
*Cathartes aura*  
 2" W, 2 ¾" H  
**KO-441.....\$34**

**Kori Bustard**  
*Ardeotis kori*  
 2 ¼" W, 3" H  
**KO-439.....\$38**

**King Penguin**  
*Aptenodytes patagonicus*  
 3 ¼" W, 4 ¼" H  
**KO-181.....\$42**

**Horned Puffin**  
*Fratercula corniculata*  
 1 ⅝" W, 2 ⅝" H  
**KO-438.....\$38**

**Marbled Murrelet**  
*Brachyramphus marmoratus*  
 1 ¾" W, 2 ¼" H  
**KO-437.....\$38**

**California Condor**  
*Gymnogyps californianus*  
 3 ½" W, 4" H  
**KO-017.....\$48**



# Mammals: Marine, Egg Laying

All photographs © Bone Clones, Inc.



## Marine Mammal Skeletons

SC-033-A	Dolphin, Articulated .....	\$ 9,800
SC-033-D	Disarticulated.....	\$ 7,700
SC-321-A	Fossil Dugong Articulated.....	\$ 15,000
SC-321-D	Disarticulated.....	\$ 10,800
SC-046-A	Manatee, Articulated, Stand, Wood Base...	\$ 8,900
SC-046-D	Disarticulated.....	\$ 7,700

## Marine Mammal Limbs

KO-233	Dolphin (Hand, Radius, Ulna, Humerus)....	\$ 195
KO-233-S	Dolphin Scapula.....	\$ 100
KO-233-SET	Dolphin Pectoral Fin (Flipper: Hand, Radius, Ulna, Humerus, Scapula).....	\$ 269
KO-146	Manatee (Hand, Radius, Ulna, Humerus) ...	\$ 340
KO-146-B	Manatee Humerus.....	\$ 115
KO-146-H	Manatee (Hand, Radius, Ulna).....	\$ 175
KO-285	Seal Forelimb (Hand, Radius, Ulna, Humerus, Scapula) .....	\$ 310
KO-285-F	Seal Forelimb (No Scapula).....	\$ 249

## Marine Mammal Other Postcranials

KO-255	Humpback Whale (Thoracic Vertebra and Discs, Assembled)....	\$ 690
KO-255-DISC	Humpback Whale (Thoracic Vertebral Disc, Each) .....	\$ 120
KO-255-ND	Humpback Whale (Thoracic Vertebra without Discs) .....	\$ 520
KO-096	Right Whale (33 Feet) (1/2 Pelvis, Femur Partly Fused) .....	\$ 78
KO-146-R	Manatee Rib.....	\$ 75
KO-146-S	Manatee Scapula .....	\$ 125
CFM-05	Walrus Baculum, Straight .....	\$ 100
KO-215	Walrus Baculum, Pathological Break .....	\$ 80
KO-500	California Sea Lion Baculum .....	\$ 30

## Marine Mammal Skulls, Teeth, Tusks

BC-343	California Sea Lion.....	\$ 340
BC-014	Sea Otter .....	\$ 175
BC-033	Dolphin .....	\$ 425
BC-044	False Killer Whale .....	\$ 625
BC-046	Manatee.....	\$ 398
BC-085	Harbor Seal .....	\$ 190
BC-097	Dugong .....	\$ 445
BC-108	Walrus (Partial Skull and Tusks, Wall Mount) \$	550
BC-184	Ganges River Dolphin .....	\$ 389
BC-314	Harbor Porpoise .....	\$ 389
BC-321	Fossil Dugong.....	\$ 880
KO-044J	False Killer Whale Jaw (Full).....	\$ 220
KO-044S	False Killer Whale Jaw (Single) .....	\$ 110
KO-254	Narwhal Tusk (69 Inches) .....	\$ 459
KO-256	Narwhal Tusk (90 Inches) .....	\$ 559
KO-012	Killer Whale Tooth .....	\$ 16
KO-013	Polar Bear Tooth .....	\$ 14
KO-032	Giant Walrus Tusk .....	\$ 290
KO-042	Fossil Sperm Whale Tooth.....	\$ 165
KO-213	Sperm Whale Tooth .....	\$ 39
KO-244	False Killer Whale Tooth.....	\$ 13. <sup>50</sup>

## Egg-laying Mammal Skulls, Skeletons, Egg

BC-296	Echidna Skull.....	\$ 102
BC-026	Platypus Skull .....	\$ 105
SC-026-A	Platypus Skeleton, Articulated.....	\$ 655
SC-026-D	Disarticulated.....	\$ 455
KO-442	Platypus Egg .....	\$ 24



# Mammals: Modern & Fossil Dogs, Modern Cats

## Dog Skulls

BC-004	Siberian Wolf.....	\$ 210
BC-020A	Dire Wolf, Antique.....	\$ 249
BC-020T	Dire Wolf, Tarpit.....	\$ 269
BC-022	Great Dane.....	\$ 189
BC-023	St. Bernard.....	\$ 189
BC-024	Maned Wolf.....	\$ 170
BC-032	Hyena.....	\$ 258
BC-126	Saluki.....	\$ 180
BC-127	Airedale.....	\$ 180
BC-128	English Bulldog.....	\$ 180
BC-139	French Bulldog.....	\$ 180
BC-143E	Coyote (Economy).....	\$ 90
BC-144E	Gray Fox (Economy).....	\$ 90
BC-147	Red Wolf.....	\$ 195
BC-172	Mexican Wolf.....	\$ 205
BC-186	Pit Bull.....	\$ 190
BC-260	White Bull Terrier.....	\$ 190
BC-342	Rottweiler.....	\$ 190
BC-344	Bullmastiff.....	\$ 230
BC-348	Apple Head Chihuahua.....	\$ 159
BC-349	Deer Head Chihuahua.....	\$ 159

## Large Dog (Bullmastiff) Skeleton

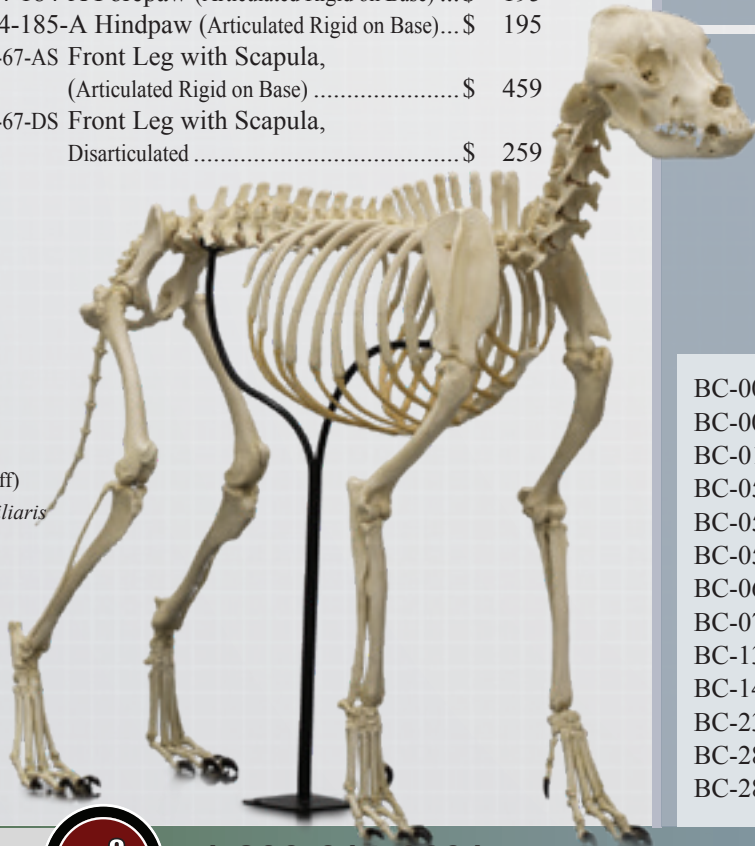
Postcranial parts at [www.boneclones.com](http://www.boneclones.com)

SC-344-A	Articulated.....	\$ 3,300
SC-344-D	Disarticulated.....	\$ 2,200

## Large Dog (Bullmastiff) Limbs, Paws

SC-344-184-A	Forepaw (Articulated Rigid on Base) ...	\$ 195
SC-344-185-A	Hindpaw (Articulated Rigid on Base)...	\$ 195
SC-344-67-AS	Front Leg with Scapula, (Articulated Rigid on Base) .....	\$ 459
SC-344-67-DS	Front Leg with Scapula, Disarticulated .....	\$ 259

SC-344-A  
Large Dog  
(Bullmastiff)  
*Canis familiaris*



## Comparative Dog Skull Sets (Economy)

### The Bone Clones® Economy Series

consists of affordable replicas that offer an opportunity for a new generation of nature and bone enthusiasts to learn about animals and anatomy. Cast from the same molds as our regular (non-economy) skulls and postcranial parts, our economy series differs in 3 basic ways:

- 1- Small details of the neural passages may not be tooled open.
- 2- Teeth are created using the same material as that of the skull.
- 3- Economy Series products may not be painted or stained, or the stain may be less pronounced than our regular versions.

These differences make it possible to produce a more economical replica that is still an excellent teaching aide.

Select comparative sets and individual skulls and bones comprise this series. Individual skull and bone product names ending in "E" denote membership. Additional products on page 8.



COMP-140 Canid (Pit Bull Dog, Wolf, Coyote, Fox)..... \$ 445



COMP-143 Domestic Dog (English Bulldog, Saluki, Rottweiler)..... \$ 425

## Modern Cat Skulls

The first true felid appeared in the fossil record during the early Oligocene.

Cats are hypercarnivores, meaning they are strictly meat-eating. This is reflected in their skeletons; shortness of the skull, short snout, wide zygomata, large carnassial teeth, and evidence of retractile claws.



BC-005	Clouded Leopard, Male.....	\$ 170
BC-008	Siberian Tiger, Male.....	\$ 340
BC-015	Cougar, Male.....	\$ 220
BC-054	African Lion, Male.....	\$ 340
BC-056	Snow Leopard, Male.....	\$ 205
BC-057	Jaguar, Male.....	\$ 205
BC-060	African Leopard, Male.....	\$ 205
BC-079	Cheetah, Male.....	\$ 199
BC-131	House Cat.....	\$ 100
BC-146E	Bobcat, Economy.....	\$ 90
BC-239	Ocelot, Large, Male.....	\$ 150
BC-286	African Lion, X-large, Male.....	\$ 345
BC-289	Bengal Tiger, Male.....	\$ 345

# Mammals: Fossil Cats

## Fossil Cat Skulls

BC-018A	Sabertooth Cat, Antique Finish, <i>Smilodon fatalis</i> .....	\$ 295
BC-018T	Sabertooth Cat, Tarpit Finish, <i>Smilodon fatalis</i> .....	\$ 309
BC-019A	American Lion, Antique Finish, <i>Felis atrox</i> .....	\$ 415
BC-019T	American Lion, Tarpit Finish, <i>Felis atrox</i> .....	\$ 445
BC-030	<i>Dinictis</i> and Stand .....	\$ 259
BC-067A	Sabertooth Cat, Deluxe, Antique Finish, <i>Smilodon fatalis</i> .....	\$ 300
BC-067T	Sabertooth Cat, Deluxe, Tarpit Finish, <i>Smilodon fatalis</i> .....	\$ 320
BC-102	Sabertooth Cat, Chinese, in Matrix, Antique, <i>Machairodus giganteus</i> .....	\$ 350
BC-103	Sabertooth Cat, South American, <i>Smilodon populator</i> .....	\$ 310
BC-104	Cave Lion, <i>Panthera spelaea</i> .....	\$ 440
BC-106	Sabertooth Cat, Chinese, <i>Megantereon nihowanensis</i> .....	\$ 370
BC-113	<i>Xenosmilus hodsonae</i> .....	\$ 495
BC-117	Sabertooth Cat, Chinese, Juvenile, <i>Machairodus giganteus</i> .....	\$ 390
BC-294	Ancestral Tiger, <i>Panthera zdanskyi</i> .....	\$ 495



CB-06	<i>Homotherium</i> .....	\$ 405
CB-07	<i>Eusmilus sicarius</i> .....	\$ 315
CB-15	<i>Hoplophoneus dakotensis</i> Cranium.....	\$ 315
CB-17	<i>Hoplophoneus occidentalis</i> in Matrix .....	\$ 340
CB-18	<i>Hoplophoneus occidentalis</i> .....	\$ 340
CB-19	<i>Hoplophoneus primaevus</i> in Matrix.....	\$ 360
CB-20	Sabertooth Cat, Chinese, <i>Megantereon nihowanensis</i> #2 .....	\$ 360
TSBC-018T	Sabertooth Cat, Tarpit Finish, 1/3 Scale <i>Smilodon fatalis</i> , .....	\$ 155

## Fossil Cat Sabers

From BC-018

KO-212	Sabers, Left or Right, Each .....	\$ 28
KO-212P	Sabers, Left and Right, Pair .....	\$ 55

## Fossil Sabertooth Cat Skeletons

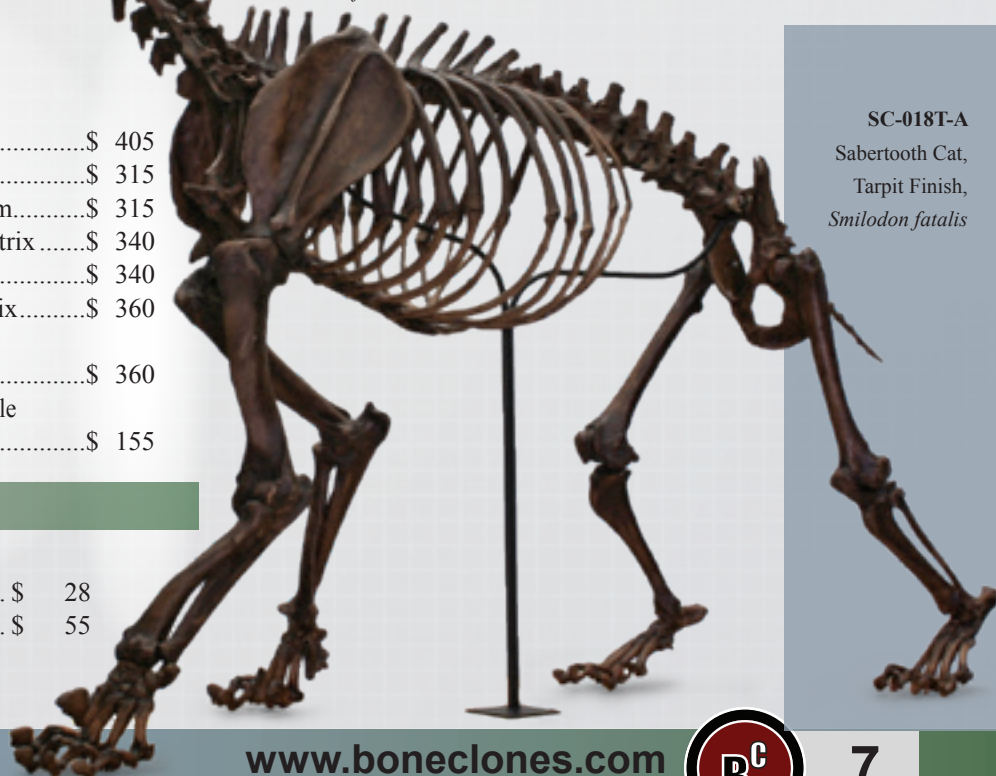
<i>Smilodon fatalis (californicus)</i> Quadrupedal Articulation		
SC-018A-A	Antique Finish .....	\$ 7,000
SC-018T-A	Tarpit Finish (shown).....	\$ 8,000
<i>Smilodon fatalis (californicus)</i> Disarticulated		
SC-018A-D	Antique Finish .....	\$ 5,200
SC-018T-D	Tarpit Finish .....	\$ 5,800
<i>Xenosmilus hodsonae</i>		
SCB-012-A	Quadrupedal Articulation .....	\$ 9,000
SCB-012P-D	Disarticulated.....	\$ 6,500

Postcranial parts at [www.boneclones.com](http://www.boneclones.com)



TSBC-018T  
Sabertooth Cat,  
Tarpit Finish,  
1/3 Scale  
*Smilodon fatalis*

BC-018T  
Sabertooth Cat,  
Tarpit Finish,  
*Smilodon fatalis*



SC-018T-A  
Sabertooth Cat,  
Tarpit Finish,  
*Smilodon fatalis*

# Mammals

## Giraffe, Okapi, Rhino, Hippo, Economy North American, Rodent, Marsupial

### Giraffe Skull & Neck, Okapi

BC-039	Okapi Skull .....	\$ 425
BC-034	Giraffe Skull .....	\$ 760

Recognized the world over by their long necks, long legs and distinctive coloration, giraffes can stand over 18 feet tall and weigh over 4200 pounds. A giraffe's long neck contains only seven elongated cervical vertebrae, the same number as in human necks.

KO-225	Single Giraffe Neck Bone.....	\$ 130
KO-225-7	Giraffe Neck Bones: Set of 7.....	\$ 850
SC-034-A	Giraffe Skull and Neck Vertebrae with Stand .....	\$ 1,990
SC-034-AB	Giraffe Skull and Neck Vertebrae with Stand and Base.....	\$ 2,500
SC-034-D	Giraffe Skull and Neck, Disarticulated (BC-034 and KO-225-7) ..	\$ 1,530

### Rhino Skulls & Cranial Parts

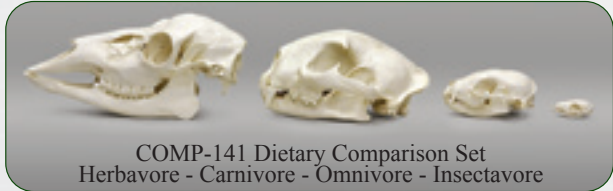
BC-051	Sumatran Rhinoceros, Skull Only .....	\$ 790
BC-051H	Sumatran Rhinoceros, Skull with Horns....	\$ 945
BC-058	White Rhinoceros, Skull Only .....	\$ 1,025
BC-058H	White Rhinoceros Skull with Horns .....	\$ 1,330
BC-326	Javan Rhinoceros Skull No Horns .....	\$ 1,150
KO-221	White Rhino Horn Pair, Large and Small....	\$ 470
KO-221L	White Rhino Horn, Large .....	\$ 305
KO-221P	Display Base for KO-221 .....	\$ 140
KO-221S	White Rhino Horn Pair .....	\$ 205
KO-251	Sumatran Rhino Horn Pair.....	\$ 205
KO-251L	Sumatran Rhino Horns, Large .....	\$ 130
KO-251P	Display Base for KO-251 .....	\$ 180
KO-251S	Sumatran Rhino Horn, Small.....	\$ 99
KO-252L	Black Rhino Horn, Large.....	\$ 210
KO-252P	Black Rhino Horn Pair.....	\$ 355
KO-252S	Black Rhino Horn, Small.....	\$ 159

### Hippo Skulls & Cranial Parts

BC-037	Hippo Skull .....	\$ 1,650
BC-076	Pygmy Hippo Skull.....	\$ 475
KO-006S	Hippo Teeth (Full Set of 12).....	\$ 590
KO-006CU	Hippo Upper Canine or Tusk.....	\$ 65
KO-006INL	Hippo Large Incisor .....	\$ 75
KO-006INS	Hippo Small Incisor .....	\$ 50
KO-006	Hippo Lower Canine or Tusk .....	\$ 110
KO-214	Hippo Rear Molar .....	\$ 24
KO-007S	Pygmy Hippo Teeth (Full Set of 10) .....	\$ 235

### Zoological Economy Series Skulls

COMP-141	Dietary Comparison Set.....	\$ 455
COMP-142	Predator-Prey Comparison Set.....	\$ 235
BC-099E	Black Bear .....	\$ 189
BC-100E	White-tailed Doe Deer .....	\$ 155
BC-101E	Common American Beaver.....	\$ 90
BC-131E	Common House Cat.....	\$ 76
BC-142E	Raccoon .....	\$ 90
BC-143E	Coyote.....	\$ 90
BC-144E	Gray Fox .....	\$ 90
BC-145E	White-tailed Jackrabbit.....	\$ 75
BC-146E	Bobcat Male.....	\$ 90
BC-148E	Skunk .....	\$ 72
BC-157E	Javelina .....	\$ 155
BC-158E	Ringtail .....	\$ 72
BC-354E	Sheep.....	\$ 216



COMP-141 Dietary Comparison Set  
Herbavore - Carnivore - Omnivore - Insectavore



COMP-142 Predator-Prey Comparison Set  
Rabbit - Bobcat - Coyote

### Rodent Skulls

BC-061	Capybara .....	\$ 205
BC-071A	Fossil Giant Beaver, Antique .....	\$ 320
BC-071T	Fossil Giant Beaver, Tarpit .....	\$ 355
BC-088	Pika .....	\$ 99
BC-101E	Common American Beaver, Economy .....	\$ 90
BC-145E	White-tailed Jackrabbit, Economy.....	\$ 75
BC-347	American Red Squirrel .....	\$ 82

### Marsupial Skulls

BC-328	Red Kangaroo .....	\$ 178
BC-327	Wombat .....	\$ 185
BC-066	Koala.....	\$ 160
BC-013	Tasmanian Devil .....	\$ 164
BC-012	Tasmanian Wolf .....	\$ 189

Giraffe Skull and Neck Vertebrae

# Mammals

## Miscellaneous Mammal Skulls, Horse

### Miscellaneous Mammal Skulls

BC-011	Giant Anteater.....	\$ 172
BC-041	Warthog .....	\$ 430
BC-251	Babirusa .....	\$ 370
BC-089	Giant Armadillo (Modern).....	\$ 155
BC-283	Fairy Armadillo .....	\$ 95
BC-288	Common Armadillo (with Head Shield) .....	\$ 95
BC-090	Wolverine.....	\$ 185
BC-091	Chinese Water Deer .....	\$ 180
BC-100	White-tailed Doe Deer.....	\$ 180
BC-164	Muntjac.....	\$ 195
BC-125	Horse.....	\$ 450
BC-308	Aardvark.....	\$ 205

### Horse Skeleton & Postcranial

SC-125-A	Horse Skeleton, Articulated .....	\$12,000
SC-125-D	Horse Skeleton, Disarticulated.....	\$ 6,600
Horse Front Leg		
SC-125-67-AS	Assembled with Scapula on Base .....	\$ 929
SC-125-67-DS	Disarticulated .....	\$ 706
Horse Rear Leg		
SC-125-75-A	Assembled on Base .....	\$ 879
SC-125-75-D	Disarticulated .....	\$ 569
Horse Foot with Wood Base and Stand		
SC-125-184-A	Horse Fore foot .....	\$ 449
SC-125-185-A	Horse Hind foot .....	\$ 449
Horse Partial Foot, Flexible, on Brass Stand		
SC-125-FOOT	(Last 3 phalanges).....	\$ 255
SC-125-PA	Horse Pelvis Assembly (2 pcs.).....	\$ 434
SC-125-HY	Horse Hyoid.....	\$ 125

Additional Postcranial parts at [www.boneclones.com](http://www.boneclones.com)



Hands, Feet, Limbs  
Comparative Anatomy  
Printable Handouts are available on our website

SC-125-A Horse Skeleton, Articulated

# Mammals : Bears, Small Mammals

## Bear Skeletons

SC-114-A	Short-faced Bear, Articulated, Upright - shown below (Stand and Base Included).....	\$ 19,000
SC-114-AQ	Short-faced Bear, Articulated, Quadruped (Stand Included).....	\$ 19,000
SC-114-D	Short-faced Bear, Disarticulated.....	\$ 14,500

## Bear Postcranial Parts

KO-075	Black Bear Hand, Right Front, Complete.....	\$ 175
KO-114F	Short-faced Bear Femur.....	\$ 495
KO-114H	Short-faced Bear Humerus.....	\$ 480
KO-114W	Short-faced Bear Paw.....	\$ 390
KO-133	Cave Bear Baculum.....	\$ 65



Kodiak Grizzly Bear

## Bear Skulls

BC-021	Kodiak Grizzly Bear, X-large.....	\$ 390
BC-063	Polar Bear.....	\$ 390
BC-086	Lesser (Red) Panda.....	\$ 160
BC-099	Black Bear.....	\$ 210
BC-099E	Black Bear, Economy.....	\$ 189
BC-114	Short-faced Bear.....	\$ 598
BC-132	Cave Bear.....	\$ 465
BC-285	Grizzly Bear.....	\$ 355
BC-025	Giant Panda, Adolescent.....	\$ 290
BC-324	Giant Panda, Adult.....	\$ 325

## Small Mammal Skulls

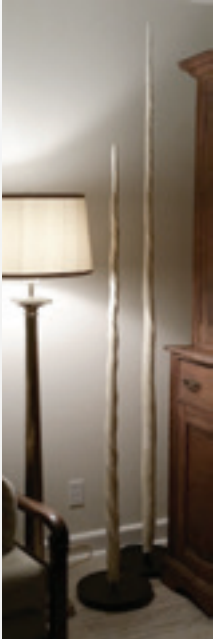
BC-007	Fruit Bat.....	\$ 90
BC-312	Greater Flying Fox.....	\$ 104
BC-048	Vampire Bat, True Size 1:1 Scale.....	\$ 85
TSBC-333	Vampire Bat, Scaled Up 8 Times from Real Size....	\$ 195
BC-334	Cave Myotis Bat, True Size 1:1 Scale.....	\$ 85
TSBC-334	Cave Myotis Bat, Scaled Up 8 Times from Real Size....	\$ 180
BC-042	Meerkat.....	\$ 90
BC-049	Flying Lemur.....	\$ 104
BC-052	Solenodon, Cuban.....	\$ 90
BC-053	Solenodon, Haitian.....	\$ 90
BC-055	Black-footed Ferret.....	\$ 102
BC-066	Koala.....	\$ 160
BC-070	Rock Hyrax.....	\$ 124
BC-082	Elephant Shrew.....	\$ 89
BC-083	Tree Shrew.....	\$ 89
BC-098	Two-toed Sloth.....	\$ 104
BC-336	Three-toed Sloth.....	\$ 106
BC-283	Fairy Armadillo.....	\$ 95
BC-288	Common Armadillo (with Head Shield) .	\$ 95
BC-088	Pika.....	\$ 99





# Mammals: Teeth, Small Mammals

**Teeth:** Much about an animal's lifestyle can be learned from its teeth. An animal's dentition gives clues as to how and what it eats. Some teeth are shaped perfectly for stabbing, cutting or slicing, while others work well to grind.



## Tooth

KO-012	Killer Whale.....	\$ 16
KO-013	Polar Bear.....	\$ 14
KO-039	<i>T. rex</i> .....	\$ 75
KO-042	Fossil Sperm Whale.....	\$ 165
KO-045	African Elephant.....	\$ 150
KO-156	Supercroc ( <i>Sarcosuchus</i> ).....	\$ 35
KO-159	Nile Crocodile.....	\$ 18
KO-160	American Alligator.....	\$ 18
KO-213	Modern Sperm Whale.....	\$ 39
KO-223	Great White Shark.....	\$ 9
KO-244	False Killer Whale.....	\$ 13.50

## Tusks

KO-031	Walrus Tusks (Pair).....	\$ 360
KO-031S	Walrus Tusk (Single).....	\$ 195
KO-032	Giant Walrus.....	\$ 290
KO-224-4	Warthog (Set of 4).....	\$ 175
KO-286-4	Babirusa (Set of 4).....	\$ 120
BC-256	Narwhal (90 Inches, Pictured).....	\$ 559
BC-254	Narwhal (69 Inches, Pictured).....	\$ 459
BC-159-P	Woolly Mammoth (From BC-159, Pair) ...	\$ 750
BC-159-S	Woolly Mammoth (From BC-159, Single)	\$ 390

## Sabertoothed Cat Sabers

KO-067	Deluxe, Large, Single (from BC-067).....	\$ 25
KO-067P	Deluxe, Large, Pair (from BC-067).....	\$ 50
KO-103	Left or Right, Each (from BC-103).....	\$ 22
KO-103P	Pair (from BC-103).....	\$ 40
KO-212	Left or Right, Each (from BC-018).....	\$ 28
KO-212P	Left or Right, Pair (from BC-018).....	\$ 55

## Canine Tooth

KO-104	Cave Lion.....	\$ 48
KO-132	Cave Bear.....	\$ 38
KO-217	Tiger.....	\$ 15
KO-217-4	Tiger Teeth (Set of 4).....	\$ 58
KO-216	Lion Tooth.....	\$ 15
KO-216-4	Lion Teeth (Set of 4).....	\$ 58
KO-248	Leopard.....	\$ 14.50

## Molar

KO-025	Cave Bear.....	\$ 18
KO-214	Hippo.....	\$ 24

## Small Mammal Skeletons

Flying Lemur (Colugo) - Pictured, left. See page 10 for Skull

SC-049-A Articulated (Includes Stand)..... \$ 1,025

SC-049-D Disarticulated..... \$ 650

### Bats

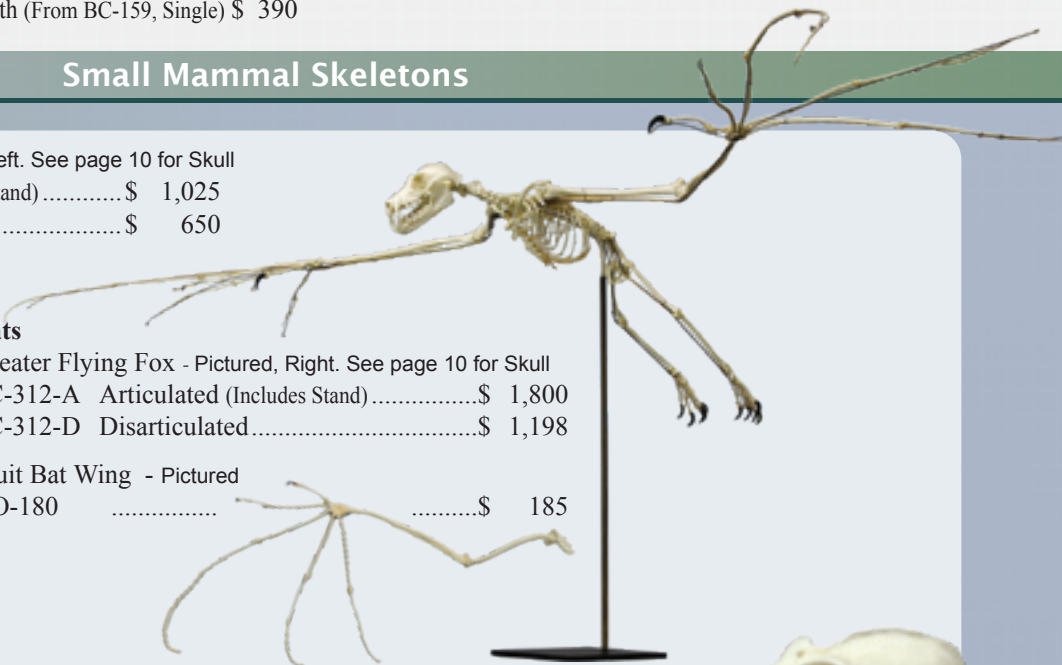
Greater Flying Fox - Pictured, Right. See page 10 for Skull

SC-312-A Articulated (Includes Stand)..... \$ 1,800

SC-312-D Disarticulated..... \$ 1,198

Fruit Bat Wing - Pictured

KO-180 ..... \$ 185



## MAMMALIAN FLIGHT

Bats are the only mammals to have developed true, self-propelled, flight. Other aerialist mammals like flying lemurs use gliding to get from place to place. Gliding relies on gravity and air resistance and is essentially a controlled fall from a height.

As a forelimb, a bat's wing is homologous (the same as) to the human arm and a bird forelimb as it evolved from the same osteological structures. However, as a wing the forelimb is analogous (similar structures but evolved independently to serve the same purpose) to a bird's wing since bats and birds evolved flight separately and use different strategies to achieve self-propelled flight. To propel themselves aerially, birds use their entire forelimb (arm) for flight, while bats depend on a modified hand structure for their ability to fly. Because the bat's hand can assume a multitude of shapes, bats are capable of extreme maneuverability.

# Claws & Talons

## Bird, Reptile, Fossil, Comparative

## Mammalian

### Avian Talons

KO-004	Great Horned Owl.....	\$ 10
KO-020	Golden Eagle.....	\$ 12
KO-021	Bald Eagle.....	\$ 10.50
KO-022	Red-tailed Hawk .....	\$ 10.50
KO-023	Raven .....	\$ 10.50
KO-029	Peregrine Falcon .....	\$ 10.50
KO-065	Barn Owl.....	\$ 7.50
KO-243C	Harpy Eagle .....	\$ 12

### Avian Talon Sets

KO-100-BIRDS	Set of 8 Bird Talons in Riker Box....	\$ 110
	Great Horned Owl, Golden Eagle, Bald Eagle, Red-tailed Hawk, Raven, Peregrine Falcon, Barn Owl, Harpy Eagle	
KO-024	Set of 6 Raptor Talons: .....	\$ 57
	Harpy Eagle, Golden Eagle, Bald Eagle, Red-tailed Hawk, Falcon, Great Horned Owl	

### Reptilian Claws

KO-059	Snapping Turtle.....	\$ 9
KO-002	Komodo.....	\$ 10

### Fossil Claws

KO-037	<i>Allosaurus</i> .....	\$ 75
KO-063	<i>Apatosaur</i> .....	\$ 125
KO-073	<i>Tarbosaurus bataar</i> .....	\$ 59
KO-074	<i>T. rex</i> .....	\$ 48

### Comparative Set of 31 Claws & Talons

KO-100-SET-31 .....	\$ 385
---------------------	--------

#### Includes:

KO-100-BIRDS	8 Bird Talons
KO-100-CATS	10 Felid Claws
KO-100-BEARS	4 Bear Claws
KO-100-CANIDS	4 Canid Claws
Plus 5 additional claws and Riker Box	
Photo with identification labels	



### Cat Claws

KO-050	African Lion.....	\$ 16
KO-051	Lynx .....	\$ 10.50
KO-052	Bobcat .....	\$ 9.50
KO-053	Cougar.....	\$ 15
KO-058	Russian Lynx.....	\$ 12
KO-066	Cheetah Dew Claw .....	\$ 10
KO-069	Cheetah Front Claw .....	\$ 10
KO-068	African Leopard.....	\$ 10
KO-071	Siberian Tiger (Pictured).....	\$ 15.50
KO-072	Jaguar .....	\$ 15.50

### Cat Claw Set

KO-100-CATS	Set of 10 Cat Claws in Riker Box....	\$ 155
	African Lion, Lynx, Bobcat, Cougar, Russian Lynx, Cheetah Dew Claw, Cheetah Front Claw, African Leopard, Siberian Tiger, Jaguar	

### Bear Claws

KO-047	Grizzly Bear .....	\$ 16
KO-048	Polar Bear.....	\$ 16
KO-049	Black Bear.....	\$ 15
KO-076	Black Bear Front Claws (Set of 5).....	\$ 60
KO-062	Sloth Bear (Pictured).....	\$ 16

### Bear Claw Sets

KO-100-BEARS	Set of 4 Bear Claws in Riker Box.....	\$ 110
	Grizzly, Polar, Black, and Sloth	
KO-062-SET-20	Sloth Bear Claws in Riker Box .....	\$ 290
	Front and Rear	

### Canid Claws

KO-054	Wolf.....	\$ 10
KO-055	Fox .....	\$ 10
KO-070	Coyote.....	\$ 10

### Canid Claw Set

KO-100-CANIDS	Set of 4 Canid Claws in Riker Box .....	\$ 60
	Wolf, Fox, Raccoon, Coyote	

### Rodent Claws

KO-057	Beaver .....	\$ 10
KO-061	Porcupine .....	\$ 10

### Miscellaneous Claws

KO-056	Raccoon.....	\$ 9
KO-060	Badger .....	\$ 10
KO-142	Two-toed Sloth.....	\$ 15
KO-140	Giant Anteater .....	\$ 17

# Reptile & Amphibian

# Sharks, Rays & Fish

## Skulls



Dwarf Crocodile

BC-006	Gila Monster .....	\$ 135
BC-009	Dwarf Crocodile, 8 Inches (Pictured) .....	\$ 170
BC-027	Komodo Dragon.....	\$ 255
BC-028	Tuatara .....	\$ 135
BC-038	Nile Crocodile (26 Inches) .....	\$ 590
BC-045	Gavial (30 Inches).....	\$ 590
BC-094	Goliath Frog .....	\$ 98
BC-105	Alligator (12 Inches).....	\$ 218
BC-118	Python .....	\$ 218
BC-119	Anaconda .....	\$ 218
BC-121	Gaboon Viper .....	\$ 205
BC-122	Chinese Giant Salamander .....	\$ 115
BC-129	Alligator (20 Inches).....	\$ 365
BC-138	Chameleon .....	\$ 75
BC-179	King Cobra.....	\$ 205
BC-229	Saltwater Crocodile (33 Inches) .....	\$ 790
BC-262	American Alligator, X-large (29 1/2 Inches)...	\$ 700
BC-272	American Crocodile (33 1/2 Inches) .....	\$ 705
BC-273	Nile Crocodile, 30 Inches .....	\$ 770
BC-278	Saltwater Crocodile (6 1/2 Inches).....	\$ 160
BC-329	Black Mamba .....	\$ 205
BC-064	Loggerhead Turtle .....	\$ 248
BC-271	Alligator Snapping Turtle .....	\$ 230
BC-317	Galapagos Tortoise.....	\$ 220
BC-318	Aldabra Tortoise.....	\$ 220



Skeletons

SC-027-A	Komodo Skeleton, Articulated .....	\$ 4,500
SC-027-D	Komodo Skeleton, Disarticulated .....	\$ 3,500
SC-094-A	Goliath Frog Skeleton, Articulated (Pictured) .....	\$ 580
SC-094-D	Goliath Frog Skeleton, Disarticulated...	\$ 460

## Cranial & Postcranial Parts

KO-027-P	Komodo Pelvis.....	\$ 95
KO-159	Nile Crocodile Tooth, Large .....	\$ 18
KO-160	American Alligator Tooth, Large .....	\$ 18
KO-038	Alligator Snapping Turtle Shell .....	\$ 395

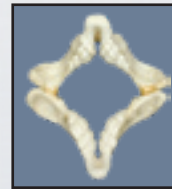
## Life Casts

CTOM-01	Moloch .....	\$ 195
CTOM-02	Shingleback.....	\$ 259
LC-270	Gila Monster .....	\$ 290
LC-271	Tuatara .....	\$ 290
LC-272	Savannah Monitor.....	\$ 2,575

(See Back Cover for Photograph)

## Jaws & Teeth

BC-095	Great White Shark Jaw, Large .....	\$ 2,650
	See image page 25	
BC-095-JO	Great White Shark Jaw, Large (Jaw Only, No Teeth) .....	\$ 750
KO-009	Great White Shark Teeth First Row: Set of 46 in Riker Box (Full Set) .....	\$ 300
KO-009-1	Great White Shark Teeth: Set of 23 in Riker Box (1/2 of Set) .....	\$ 175
KO-223	Great White Shark Tooth, 2 1/2 Inches.....	\$ 9
BC-231	Sandbar Shark Jaw .....	\$ 248
BC-232	Zebra Bullhead Shark Jaw .....	\$ 125
BC-233	Kitefin Shark Jaw .....	\$ 136
BC-234	Shark Ray Jaw .....	\$ 136
BC-235	Sharpnose Sevengill Shark Jaw .....	\$ 136
BC-236	Shortfin Mako Jaw .....	\$ 245
BC-237	Zebra Shark Jaw .....	\$ 135
BC-249	Great White Shark Jaw, Small.....	\$ 248



BC-250	Port Jackson Shark Jaw (Pictured) .....	\$ 155
BC-307	Whale Shark Jaw .....	\$ 750
BC-309	Tiger Shark Jaw .....	\$ 335
BC-230	Stingray Jaw.....	\$ 155
BC-238	Bat Ray Jaw .....	\$ 130

## Whorl Tooth Shark Teeth

KO-001	In Matrix on Display Stand.....	\$ 155
--------	---------------------------------	--------

## Life Cast

LC-239	Coelacanth .....	\$ 5,000
--------	------------------	----------

See page 25 for photographs

## Skull, Cranial Parts, & Post Cranial Parts

BC-120	Tambaqui .....	\$ 295
KO-222	Giant Squid Beak.....	\$ 98
KO-098	Sting Ray Tail Spine .....	\$ 45

## Fossil Megalodon Shark Teeth



CB-11-46P	BIOPSI: Set of 46 .....	\$1,950
CH-31-46P	Hubbell: Set of 46 .....	\$1,750
KO-008	Record Size (7 1/8 Inches) ..	\$ 80
KO-008-2	X-large (7 Inches).....	\$ 80
KO-008-3	X-large (6 3/4 Inches) .....	\$ 80
KO-008-SET	Set of 4 Giants.....	\$ 275
KO-218	Large (6 Inches, Pictured) ..	\$ 65

## Fossil Megalodon Shark Jaw with Teeth Assembled (Stand Included)

See image on page 25 - Size Comparison: Great White Shark Jaw with Teeth on Stand, Megalodon Shark Jaw with Teeth on Stand.

BC-295-A3	With 3 Rows of 46 Teeth .....	\$ 24,000
BC-295-A4	With 4 Rows of 46 Teeth .....	\$ 26,000
BC-295-A5	With 5 Rows of 46 Teeth .....	\$ 27,000

## About Our Category: Fields of Study



In our fields of study category, we wanted to provide all the ways in which our Bone Clones® replicated skeletons can be used to teach anatomy. We have extended this to include physical anthropology, forensics, locomotion, physical therapy, paleontology, zoology, veterinary medicine, and anatomy for the artist.



**BIOARCHAEOLOGY**  
PRIMATE LOCOMOTION

**ANATOMY FOR THE ARTIST**  
ZOOLOGY

**PALEONTOLOGY**  
NON-PRIMATE LOCOMOTION

### Dental Anthropology

DAS-100-SET	The Turner-Scott Dental Anthropology System - Set of 27 Dental Plaques, Includes Custom Storage Box with Protective Foam Inserts .....	\$ 795
KO-247-SET	Set of 20 Deciduous Teeth, on Base, (From BC-247 3 1/2-year-old Child) .....	\$ 298
BC-209	Human Child Skull 16-month-old (16-18 Months) .....	\$ 245
BC-135	Human Child Skull 12-year-old (11-13 Years), Dentition Exposed .....	\$ 279



One of the 27 Turner-Scott dental reference plaques

COMP-105	Comparative Maxilla Set .....	\$ 168	KO-164-SET	Human Male Teeth, Set of 32, Adult .....	\$ 305
BC-001-J	Male Western Lowland Gorilla Mandible .....	\$ 95	KO-191-018	Human Medical Skull, Teeth, Set of 32 in Base .....	\$ 298
KO-191-011	Human Medical Skull, Maxilla, Left .....	\$ 55			

### Zoarchaeology

#### SKULLS

BC-144E	Gray Fox, Economy .....	\$ 90
BC-148E	Skunk, Economy .....	\$ 72
BC-004	Siberian Wolf .....	\$ 210
BC-142E	Raccoon, Economy .....	\$ 90
BC-048	Vampire Bat, True Size .....	\$ 85
BC-075	Crow .....	\$ 134
BC-072	Great Horned Owl .....	\$ 124
BC-112	Pileated Woodpecker .....	\$ 130
COMP-142	Predator-Prey Comparison Economy Set ..	\$ 235

#### EGGS

KO-411	Golden Eagle .....	\$ 36
KO-418	Red-tailed Hawk .....	\$ 31

#### COMPARATIVE PATHOLOGY

FO-404	Coyote Tibia and Fibula, Pair .....	\$ 90
FO-401	Deer Jaws, Pair .....	\$ 115
FO-402	Goat Cannon Bones, Pair (Metatarsals) ..	\$ 90

#### SETS & INDIVIDUAL ELEMENTS

SC-074-67-A	Raven Wing, Articulated .....	\$ 135
SC-068-67-A	Bald Eagle Wing, Articulated .....	\$ 135
SC-344-ARCH	Large Dog Archaeology Set (Pictured) ..	\$ 198
SC-125-HY	Horse Hyoid .....	\$ 125
SC-125-FOOT	Horse Foot, Flexible (Coffin, P-2, P1) ..	\$ 255
SC-125-04	Horse Humerus .....	\$ 162
KO-075	Black Bear Hand .....	\$ 175
KO-138	California Condor Foot .....	\$ 148
BC-078-SET	Red-tailed Hawk Skull, Egg and Talon ..	\$ 164
SC-344-184-A	Large Dog Forepaw, Articulated, Rigid ..	\$ 195

#### CLAWS & TALONS

KO-100-SET-31	Set of 31 Claws in Riker Box .....	\$ 385
KO-024	Set of 6 Raptor Talons: .....	\$ 57
	Harpy, Golden, & Bald Eagles, Falcon, Red-tailed Hawk, Great Horned Owl	
KO-047	Grizzly Bear Claw .....	\$ 16

### Marine Archaeology

KO-146-H	Manatee Flipper (Pectoral Fin) .....	\$ 175	KO-044S	False Killer Whale Jaw, Half .....	\$ 110
KO-146-R	Manatee Rib .....	\$ 75	BC-238	Bat Ray Jaw .....	\$ 130
KO-233	Dolphin Flipper, (Pectoral Fin) .....	\$ 195	KO-213	Sperm Whale Tooth .....	\$ 39
BC-105	Alligator Skull, 12 Inches .....	\$ 218	KO-012	Killer Whale Tooth .....	\$ 16
BC-014	Sea Otter Skull .....	\$ 175	KO-098	Sting Ray Tail Spine .....	\$ 45
BC-085	Harbor Seal Skull .....	\$ 190	KO-500	California Sea Lion Baculum .....	\$ 30
			KO-285	Seal Forelimb (Pictured) .....	\$ 310

# Bioarchaeology

Osteology and archaeology intersect in the field of bio-archaeology. Bones and bone fragments found in burial sites and abandoned settlements inform archaeologists of human presence, of a site-specific population's diet, subsistence and hunting practices, and of the history of animal domestication, shedding light on past humans and their interactions with animal populations.

We have selected human and animal bones that may be instructive in a classroom setting, and useful as identification aids in the field such as bones from animal species that are frequently found in historic and archaeological sites, animal and human pathology and trauma specimens, and a curated selection of human skulls and bones.



K-12 EDUCATION  
ADVANCED ANATOMY

FORENSICS  
VETERINARY

PHYSICAL THERAPY  
PHYSICAL ANTHROPOLOGY

## Osteoarchaeology

COMP-120-SET	Human Male and Female Skulls, Set of 6: African, Asian and European.....	\$ 1,395
COMP-110-C	Bone Box Kit, Child, Left Side Only, Box Included.....	\$ 790
COMP-110-M	Bone Box Kit, Male, Left Side Only, Box Included.....	\$ 775
COMP-110-F	Bone Box Kit, Female, Left Side Only, Box Included.....	\$ 775
COMP-115	Bone Scaling Set of 12 Femurs.....	\$ 749
COMP-M-407-SET	Comparative Set: Human Adult Male European, Radius, Ulna, Tibia, Fibula.....	\$ 179
FM-509-SET	Human Male Partial Skeleton, European-American, 13-year-old.....	\$ 1,195
FM-528-SET	Set of FM-528, FM-529, FM-530, Human Male European-American, 65-year-old.....	\$ 220
FM-534-SET	Set of 5 (FM-534 through FM 538), 39-year-old European-American Female.....	\$ 320
SC-092-10-SET	Human Male Asian Vertebrae, Set of 3: Cervical, Thoracic, Lumbar.....	\$ 56
SC-092-33T	Human Male Asian Rib T-6.....	\$ 18
SC-092-69	Human Male Asian Tibia.....	\$ 45
SC-092-IF	Human Male Innominate and Femur.....	\$ 130
SC-183-HSC	Human 5-year-old Child Set of 3: Humerus, Scapula and Clavicle.....	\$ 150
KO-350-SET	Human Fetal Full Term, Set of 8 Post-Cranial Bones: KO-350 through KO-357.....	\$ 95
BC-031	Human Male Australian Aboriginal Skull.....	\$ 259
BC-302	Human Male Polynesian Skull.....	\$ 299
BC-213	Human Female American Indian Skull.....	\$ 275
BC-182	Human Fetal Skull 40 Weeks (Full Term).....	\$ 84
KO-340-CSET	Human Fetal Set of 53 Post Cranial Fetal Bones (All 8 Sets).....	\$ 608
H-04-F	Human Adult Female Hand, Disarticulated.....	\$ 150
KO-117	Archaic Human 5-year-old Child Articulated Foot.....	\$ 105

## Paleopathology

KOH-450	Human Male Mandible with Dental Abscessing.....	\$ 105
FM-601	Human Calvarium with Hyperostosis Frontalis Interna.....	\$ 95
FM-531	Human 68-year-old Male Ossified Thyroid.....	\$ 49
KO-170-SET	Human Adult Female Femur, Osteoporosis Comparative Set.....	\$ 145
FO-105-SET	Human Comparative Lumbar Vertebra Set of 10 (Arthritic and Normal).....	\$ 375
KOH-442	Human Innominate and Sacrum, Tuberculosis.....	\$ 285
KO-270	Human Left Clavicle with Healed Double Fracture.....	\$ 85
KO-268	Human Sacrum with Spina Bifida Occulta.....	\$ 142
KO-444	Human Left Femur, Osteosarcoma.....	\$ 165
KOM-804-SET	Human Skull Trauma Set of Six Fragments.....	\$ 195
FM-501-SET	Human Fracture Set, Male European 62-year-old.....	\$ 615
BC-201	Human Male Elongated, Trephinated Skull.....	\$ 278
KO-271	Human Left Ulna with Healed Parry Fracture.....	\$ 85
KO-272	Human Partial Left Femur with Healed Hip Fracture.....	\$ 129
FO-109	Human Adult Remote Hip Fracture.....	\$ 89
KO-443	Human Femur, Tibia and Fibula, Rickets.....	\$ 240
BCH-809	Human Female Cranium, Meningioma (Pictured).....	\$ 330

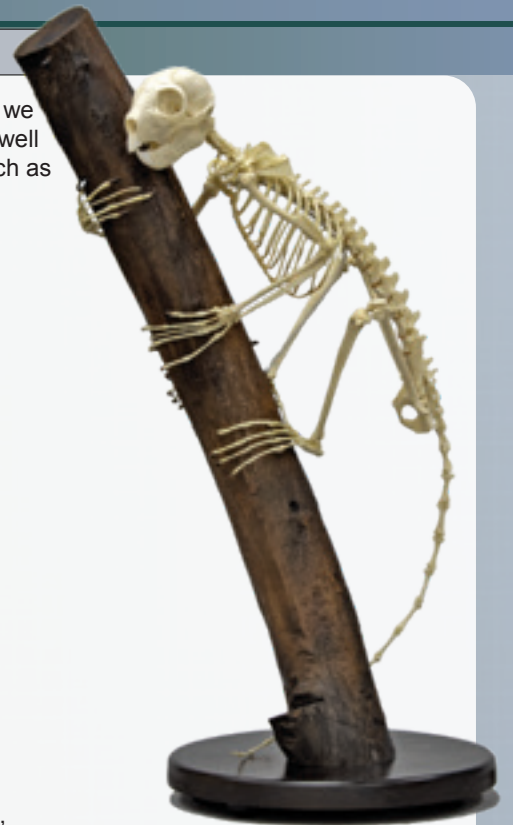
# Mammals: Non-Human Primates

## Skeletons

For each of our non-human primate skeletons, we offer articulated and disarticulated versions as well as skulls, cranial parts, and postcranial parts such as individual bones and sets of bones.



- Chimpanzee
- Bonobo
- Gorilla
- Orangutan
- Mandrill Baboon
- Rhesus Macaque
- Weeping Capuchin
- Vervet
- Aye-aye
- Indri Lemur
- Siamang
- Black Spider Monkey



Please see our website for complete listings, on each animal's "group" page.

SC-003-A Articulated Chimpanzee Skeleton \$ 3,550

SC-353-A Articulated Aye-aye Skeleton \$ 3,300

## Non-Human Primate Categories

The order Primates arose in the fossil record during the Eocene (56-33 million years ago). The fossils of these early primates possessed particular traits that are recognized as "true primate" features – forward facing eye sockets, large brain, complete postorbital construction to protect the eye, an opposable big toe and nails instead of claws. Included in the order Primate are strepsirrhines (lemurs and lorises), and haplorhines (apes, New World monkeys, Old World monkeys). Today, primates can be found in terrestrial and arboreal environments in Africa, Madagascar, Asia and Southeast Asia, parts of the Middle East, Central and South America.



All  
Skulls  
Skeletons  
Cranial Elements

Postcranial Elements  
Infant & Fetal  
Brains & Endocasts  
Life Casts

Sculpture  
Sets & Series  
Accessories

# Skulls & Skeletons

## Skeletons

SC-002-A	Orangutan, Articulated.....	\$ 4,950
SC-002-D	Orangutan, Disarticulated .....	\$ 3,550
SC-003-A	Chimpanzee, Articulated (Pictured, Left)..	\$ 3,550
SC-003-BP	Chimpanzee, Bipedal on Stand.....	\$ 3,550
SC-003-D	Chimpanzee, Disarticulated .....	\$ 2,500
SC-028-A	Gorilla, Articulated .....	\$ 4,950
SC-028-BP	Gorilla, Bipedal on Stand.....	\$ 4,950
SC-028-D	Gorilla, Disarticulated.....	\$ 3,550
SC-047-A	Siamang, Articulated.....	\$ 2,495
SC-047-D	Siamang, Disarticulated .....	\$ 1,925
SC-047-SA	Siamang, Semi-articulated .....	\$ 1,700
SC-123-A	Bonobo, Articulated .....	\$ 3,550
SC-123-D	Bonobo, Disarticulated .....	\$ 2,500
SC-010-A	Mandrill Baboon, Articulated .....	\$ 3,600
SC-010-D	Mandrill Baboon, Disarticulated.....	\$ 2,500
SC-069-A	Vervet Monkey, Articulated .....	\$ 2,550
SC-069-D	Vervet Monkey, Disarticulated.....	\$ 1,900
SC-137-A	Rhesus Macaque, Articulated.....	\$ 2,550
SC-137-D	Rhesus Macaque, Disarticulated.....	\$ 1,900
SC-263-A	Weeping Capuchin, Articulated .....	\$ 2,550
SC-263-D	Weeping Capuchin, Disarticulated.....	\$ 1,900
SC-265-A	Black Spider Monkey, Articulated.....	\$ 2,550
SC-265-D	Black Spider Monkey, Disarticulated ....	\$ 1,900
SC-282-A	Indri Lemur, Articulated on Branch.....	\$ 2,995
SC-282-D	Indri Lemur, Disarticulated.....	\$ 2,400
SC-353-A	Aye-aye, Articulated on Branch (Pictured) ...	\$ 3,300
SC-353-D	Aye-aye, Disarticulated.....	\$ 2,900

## Skulls

Great Apes

New World Monkeys

Old World Monkeys

Prosimians



BC-001



BC-298



BC-282



BC-320

## Skulls

BC-003	Chimpanzee Male .....	\$ 259
BC-248	Chimpanzee Female.....	\$ 259
BC-207	Chimpanzee Infant, 11 Months.....	\$ 195
BC-325	Chimpanzee Juvenile .....	\$ 238
BC-205	Chimpanzee Fetal, Near Full Term .....	\$ 145
BC-292	Chimpanzee Male, Calvarium Cut.....	\$ 310
BC-123	Bonobo Female .....	\$ 255
BC-252	Bonobo Male.....	\$ 265
BC-001	Western Lowland Gorilla Male (Pictured)..	\$ 315
BC-036	Gorilla Male, X-large.....	\$ 330
BC-035	Gorilla Female .....	\$ 290
BC-002B	Bornean Orangutan Male.....	\$ 285
BC-124	Mountain Gorilla Male .....	\$ 345
BC-339	Gorilla Infant, 7-month-old.....	\$ 190
BC-002S	Sumatran Orangutan Male .....	\$ 290
BC-255	Bornean Orangutan Female .....	\$ 258
BC-208	Orangutan Infant, 11 Months .....	\$ 182
BC-206	Orangutan Fetal, Near Full Term .....	\$ 145
BC-047	Siamang.....	\$ 185
BC-290	Siamang Male, Large.....	\$ 195
BC-291	White-handed Gibbon Male .....	\$ 195
BC-010	Mandrill Baboon Male.....	\$ 255

BC-261	Mandrill Baboon Female .....	\$ 230
BC-258	Chacma Baboon Male.....	\$ 250
BC-259	Chacma Baboon Female.....	\$ 230
BC-137	Rhesus Macaque Monkey.....	\$ 178
BC-017	Howler Monkey.....	\$ 180
BC-069	Vervet Monkey.....	\$ 175
BC-298	Talapoin Monkey (Pictured) .....	\$ 145
BC-265	Black Spider Monkey .....	\$ 165
BC-304	Saki Monkey.....	\$ 155
BC-319	Titi Monkey .....	\$ 109
BC-320	Squirrel Monkey (Pictured) .....	\$ 109
BC-263	Weeping Capuchin.....	\$ 160
BC-084	Hanuman Langur .....	\$ 185
BC-346	Colobus Monkey.....	\$ 175
BC-109	Owl Monkey .....	\$ 115
BC-080	Cotton-top Tamarin.....	\$ 105
BC-081	Pygmy Marmoset.....	\$ 105
BC-311	Common Marmoset .....	\$ 105
BC-050	Tarsier .....	\$ 95
BC-087	Ring-tailed Lemur.....	\$ 129
BC-136	Mouse Lemur.....	\$ 98
BC-282	Indri Lemur (Pictured).....	\$ 155
BC-284	Sifaka Lemur .....	\$ 155
BC-353	Aye-aye .....	\$ 185
BC-163	Aye-aye, Sub-adult.....	\$ 172
BC-264	Slow Loris.....	\$ 105
BC-266	Slender Loris.....	\$ 105

# (Mostly) Non-human Primates

## Skull Sets, Cranial Elements, Fetal and Postcranial

### Skull Sets

- BC-1234-SET Set of 6 Primate Skulls (Pictured Below) .. \$ 1,446**  
 BC-016 Human, Male  
 BC-002B Bornean Orangutan, Male  
 BC-001 Western Lowland Gorilla, Male  
 BC-047 Siamang, Female  
 BC-003 Chimpanzee, Male  
 BC-123 Bonobo, Female
- COMP-136 Set of 5 Chimpanzee Skulls..... \$ 1,045**  
 BC-205 Fetal  
 BC-207 Infant  
 BC-248 Female  
 BC-003 Male  
 BC-325 Juvenile
- COMP-108 Set of 5 Lesser Primates (Base Included).. \$ 549**  
 BC-050 Tarsier  
 BC-080 Cotton-top Tamarin  
 BC-109 Owl Monkey  
 BC-081 Pygmy Marmoset  
 BC-136 Mouse Lemur

### Cranial Elements

#### MANDIBLES

- BC-003-J Chimpanzee, Male.....\$ 75  
 BC-001-J Gorilla, Male Western Lowland .....\$ 95  
 BC-002S-J Orangutan, Sumatran Male.....\$ 85

#### MAXILLAE and MANDIBLES

- BC-003-MJ Chimpanzee.....\$ 139  
 BC-001-MJ Gorilla, Male Western Lowland .....\$ 145  
 BC-002S-MJ Orangutan, Sumatran Male.....\$ 145

#### BRAINS

- KO-287 Orangutan.....\$ 220  
 KO-292-B Chimpanzee Brain.....\$ 220

#### ENDOCASTS

- KO-292-E Chimpanzee, Male.....\$ 155  
 KO-227 Bonobo, Adult Male.....\$ 155  
 KO-228 Silvery Gibbon, Adult Male.....\$ 155  
 KO-229 Gorilla, Adult Male.....\$ 155  
 KO-230 Siamang, Adult Male.....\$ 155  
 KO-231 Chimpanzee, Adult Female.....\$ 155  
 KO-232 Orangutan, Adult Male.....\$ 155



BC-1234-SET Set of 6 Primate Skulls

#### Fetal, Near Full Term Sets

- Set of 5 bones:  
 Skull, Pelvis, Femur, Humerus, Vertebra**  
 COMP-205-SET Chimpanzee .. \$ 395  
 COMP-206-SET Orangutan ..... \$ 395

- Set of 8 bones:  
 3 vertebrae - Cervical, Thoracic, Lumbar;  
 Humerus, Femur, Pelvis, Sacrum, Coccyx**  
 KO-206-SET Orangutan..... \$ 295  
 KO-205-SET Chimpanzee.....\$ 295

- Set of 3 bones:  
 Cervical, Thoracic, & Lumbar Vertebrae**  
 KO-206-VSET Orangutan..... \$ 55  
 KO-205-VSET Chimpanzee... \$ 55

#### PRIMATE PECTORAL 3 BONE SETS: Humerus, Scapula, Clavicle (HSC), Disarticulated

- SC-002-HSC Orangutan..... \$ 205  
 SC-003-HSC Chimpanzee, Male ..... \$ 205  
 SC-010-HSC Mandrill Baboon..... \$ 205  
 SC-028-HSC Gorilla..... \$ 205  
 SC-047-HSC Siamang..... \$ 150  
 SC-069-HSC Vervet Monkey..... \$ 150  
 SC-092-HSC Human Male..... \$ 150  
 SC-123-HSC Bonobo Female ..... \$ 205  
 SC-137-HSC Rhesus Macaque ..... \$ 150  
 SC-183-HSC Human, 5-year-old Child . \$ 150  
 SC-211-HSC Human, Female ..... \$ 160  
 SC-263-HSC Weeping Capuchin Monkey . \$ 150  
 SC-265-HSC Black Spider Monkey ..... \$ 150

#### Hyoids

- KO-102 Chimpanzee, Male..... \$ 45  
 KO-105 Gorilla, Female ..... \$ 45  
 KO-106 Gorilla, Male..... \$ 45  
 KO-107 Orangutan, Sumatran Male..... \$ 45  
 KO-108 Chimpanzee, Female . \$ 45  
 KO-109 Siamang ..... \$ 45  
 KO-110-SET  
 Set of 11 Primate Hyoids..... \$ 385  
 KO-111-SET  
 Set of 5 Human Hyoids ..... \$ 165

#### Chimpanzee Knee, Disarticulated

- SC-003-KJ..... \$ 149



# Tetrapods

## K-12 Education

Tetrapods are a highly diverse group of four-limbed animals that are descended from a common lizard-like ancestor and include living and extinct amphibians, reptiles, birds, and mammals. Some tetrapods live on land such as elephants, frogs, hawks and lions. Some tetrapods have returned to life in the water, such as whales, sea lions, manatees and sea turtles.

In response to their environment and needs, an animal's form adapted to best serve them. Animal skeletal structures reveal much about an animal's environment, ecological niche, behavior, diet, and locomotion. Skulls, teeth, skeletons and postcranial parts provide opportunities to learn about animals, ourselves and the natural world.

Bone Clones is pleased to provide osteological material from all of the animals illustrated below, and more.



**Aquatic**  
Swimming & Diving

**Aerial**  
Flying & Gliding

**Terrestrial**  
Crawling, Walking, Running, Jumping, Scaling,  
Hopping, Leaping, Climbing, & Swinging



## LOCOMOTION

**Horse (SC-125) : Cursorial**  
**Dog (SC-344) : Cursorial**  
**Human (SC-092) : Ambulatory**

Terrestrial adaptation for sustained speed over distance (cursorial locomotion) include:

\* Adaptation of a digitigrade or unguligrade increases stride length.

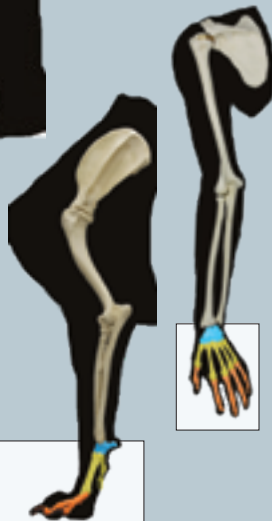
\* Increased limb bone length with reduction of number of limb bones.

\* Loss or reduction of the clavicle in mammals allows scapula mobility and increased stride length.



Wrist  
Palm  
Fingers

Hoof



Paw



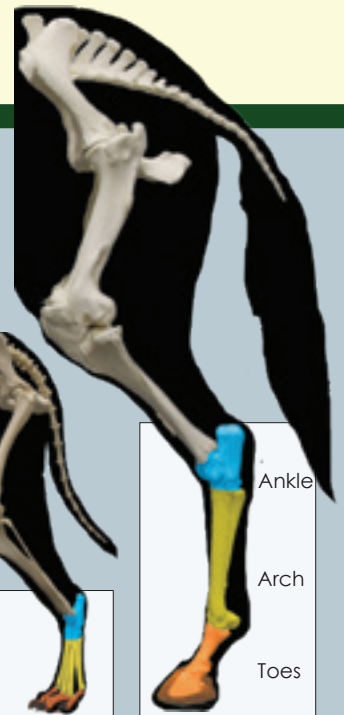
Hand



Plantigrade



Digitigrade



Ankle  
Arch  
Toes

Unguligrade

# Mammals: Non-human Primate

## About Our Collection: Postcranial (available for all skeletons)

Non-human primate postcranial elements will feature casts of modern apes, New World monkeys, Old World monkeys, as well as sets demonstrating intermembral index for indicating locomotion patterns and other concepts for primatology studies. Postcranial elements are the components that compose a skeleton without the skull.

Our website features a "group" page tab for products available in multiple articulations with parts that can be ordered separately. Please see the product's 'group' page for complete listings of available parts. Below is a listing of post-cranial specimens commonly available for each skeleton that we produce.

Hyoid  
Clavicle  
Thorax assembly  
(sternum and costal cartilage)  
Sternum

### Vertebra/Vertebrae

Cervical vertebra, single  
Thoracic vertebra, single  
Lumbar vertebra, single  
Cervical vertebrae  
Thoracic vertebrae  
Lumbar vertebrae  
Vertebrae, set of 3  
(cervical, thoracic, lumbar)  
Vertebral Column  
(all vertebrae, disarticulated)  
Set of Discs for vertebral column  
Tail (disarticulated caudal vertebrae)

### Rib/Ribs

Rib T-1  
Rib T-6  
Rib T-12  
Ribs, Set (one side)  
Ribs, Set (both sides)

### Pelvis

Pelvis, articulated  
Pelvis, disarticulated  
Innominate  
Sacrum  
Coccyx

### Sets

Pelvis & Femur  
Innominate & Femur  
Humerus, Scapula, Clavicle  
Intermembral

### Comparative Sets

Fetal, Hyoids,  
Evolutionary Hands  
Evolutionary Feet



Scapula  
Humerus  
Radius  
Ulna

### Arms

Articulated  
(w/ articulated rigid hand, no scapula)

Articulated  
(w/ articulated hand, with scapula)

Disarticulated  
(w/ disarticulated hand, no scapula)

Disarticulated  
(w/ disarticulated hand, with scapula)

### Hands

Articulated rigid  
Disarticulated  
Semi-articulated  
Articulated  
(in locomotory pose on brass stand,  
select species)

### Leg Bones

Femur  
Tibia  
Fibula  
Patella

### Legs

Articulated w/ articulated rigid foot  
Disarticulated w/ disarticulated foot

### Feet

Articulated, rigid  
Disarticulated  
Semi-articulated

SC-003-D Chimpanzee Skeleton, Disarticulated....\$2,500

# Non-human Primate Extremities, Life Casts

## (Mostly) Great Ape Hand & Feet Articulations

### Gorilla: Hand

KO-208-A	Articulated, Rigid .....	\$ 170
SC-028-184-LOC	Articulated, In knuckle-walking pose on brass stand .....	\$ 225
SC-028-184-SA	Semi-articulated.....	\$ 145
KO-208-D	Disarticulated.....	\$ 175

### Gorilla: Foot

KO-209-A	Articulated, Rigid .....	\$ 170
SC-028-185-SA	Semi-articulated.....	\$ 145
KO-209-D	Disarticulated.....	\$ 175

### Bonobo: Hand

KO-124-A	Articulated, Rigid .....	\$ 160
SC-123-184-SA	Semi-articulated.....	\$ 140
KO-124-D	Disarticulated.....	\$ 170

### Bonobo: Foot

KO-125-A	Articulated, Rigid .....	\$ 160
SC-123-185-SA	Semi-articulated.....	\$ 140
KO-125-D	Disarticulated.....	\$ 170

### Siamang: Hand

KO-149-A	Articulated, Rigid .....	\$ 150
SC-047-184-SA	Semi-articulated.....	\$ 130
KO-149-D	Disarticulated.....	\$ 160

### Siamang: Hand

KO-148-A	Articulated, Rigid .....	\$ 150
SC-047-185-SA	Semi-articulated.....	\$ 130
KO-148-D	Disarticulated.....	\$ 160

### Mandrill Baboon: Hand

SC-010-184-LOC	Articulated, In digitigrade pose on brass stand .....	\$ 195
----------------	--	--------



### Male Chimpanzee: Hand

KO-303-A	Articulated, Rigid.....	\$ 170
SC-003-184-LOC	In knuckle-walking pose on brass stand .....	\$ 210
SC-003-184-SA	Semi-articulated .....	\$ 145
KO-303-D	Disarticulated .....	\$ 175

### Male Chimpanzee: Foot

KO-304-A	Articulated, Rigid.....	\$ 165
SC-003-185-SA	Semi-articulated .....	\$ 145
KO-304-D	Disarticulated .....	\$ 175

### Fetal Chimpanzee: Humerus, Pelvis, Femur

KO-205-H	Humerus, Fetal, Near Full Term ....	\$ 60
KO-205-P	Pelvis Fetal, Near Full Term .....	\$ 145
KO-205-F	Femur, Fetal, Near Full Term .....	\$ 60

### Male Sumatran Orangutan: Hand

KO-202-A	Articulated, Rigid.....	\$ 165
KO-202-SA	Semi-articulated .....	\$ 145
KO-202-D	Disarticulated .....	\$ 175

### Male Sumatran Orangutan: Foot

KO-204-A	Articulated, Rigid.....	\$ 165
KO-204-SA	Semi-articulated .....	\$ 145
KO-204-D	Disarticulated .....	\$ 175

### Fetal Orangutan: Humerus, Pelvis, Femur

KO-206-F	Femur Fetal, Near Full Term .....	\$ 60
KO-206-H	Humerus Fetal, Near Full Term ....	\$ 60
KO-206-P	Pelvis Fetal, Near Full Term .....	\$ 145

## (Mostly) Non-human Primate Hand, Foot, & Face Life Casts

### Hand

LC-23	Chimpanzee .....	\$ 165
LC-28	Bonobo .....	\$ 155
LC-09	Gorilla, Female, Right.....	\$ 188
LC-01	Gorilla, Male, Right.....	\$ 195
LC-15	Gorilla, Male, Right Muscle.....	\$ 190
LC-05	Gorilla, Male, Left.....	\$ 195
LC-11	Orangutan Borneo, Female, Right.....	\$ 180
LC-04	Orangutan, Sumatran, Male, Right.....	\$ 195
LC-16	Orangutan, Sumatran, Male, Right, Muscle.....	\$ 190
LC-07	Orangutan, Sumatran, Male, Left.....	\$ 195
LC-13	Gibbon.....	\$ 89
LC-33-PR	Aye-aye Hand and Foot Pair.....	\$ 139

### Foot

LC-24	Chimpanzee.....	\$ 165
LC-29	Bonobo .....	\$ 155
LC-10	Gorilla, Female, Left .....	\$ 188
LC-02	Gorilla, Male, Left.....	\$ 195
LC-06	Gorilla, Male, Right.....	\$ 195
LC-12	Orangutan, Borneo, Female, Left.....	\$ 180
LC-03	Orangutan, Sumatran, Male, Left.....	\$ 195
LC-08	Orangutan, Sumatran, Male, Right.....	\$ 195
LC-14	Gibbon.....	\$ 89

### Head

LC-25	Gorilla, Female, "Fern".....	\$ 170
LC-30	Gorilla, Male .....	\$ 195
LC-26	Orangutan, Male, "Les" .....	\$ 180



JG-01 \$ 1,500  
Jane Goodall and Chimpanzee "Hand-in-Hand"  
Life Casts on Base (Limited Edition)

# Mammals: Primate Postcranial



## PELVIS & FEMUR SETS

KO-036-PF	<i>A. afarensis</i> "Lucy" Set of 5 Bones: 1/2 Pelvis, Femur, Sacrum .....	\$ 298
KO-187-PF	Chimpanzee, Female .....	\$ 275
KO-193-PF	Human, Adult, Female, Premier Example .....	\$ 235
KO-210-PF	Mandrill Baboon .....	\$ 275
SC-002-PF	Orangutan .....	\$ 295
SC-003-PF	Chimpanzee, Male .....	\$ 275
SC-012-PF	<i>H. ergaster</i> KNM-WT-15000 .....	\$ 355
SC-028-PF	Gorilla .....	\$ 299
SC-047-PF	Siamang .....	\$ 230
SC-069-PF	Vervet Monkey .....	\$ 215
SC-092-PAF-SET	Human Male, Adult, Articulated with Femora .....	\$ 308
SC-092-PF	Human, Adult Male .....	\$ 199
SC-116-PF	Human, 5-year-old Child, Archaic .....	\$ 218
SC-123-PF	Bonobo .....	\$ 265
SC-137-PF	Rhesus Macaque .....	\$ 215
SC-183-PF	Human, 5-year-old Child .....	\$ 225
SC-263-PF	Weeping Capuchin .....	\$ 215
SC-265-PF	Black Spider Monkey .....	\$ 215
SC-019-PF	Neanderthal .....	\$ 1,150

## INNOMINATE & FEMUR SETS

KO-187-IF	Chimpanzee, Female .....	\$ 198
SC-002-IF	Orangutan .....	\$ 185
SC-003-IF	Chimpanzee, Male .....	\$ 175
SC-010-IF	Mandrill Baboon .....	\$ 185
SC-012-IF	<i>Homo ergaster</i> .....	\$ 275
SC-028-IF	Gorilla .....	\$ 198
SC-036-IF	<i>Australopithecus afarensis</i> "Lucy" .....	\$ 205
SC-047-IF	Siamang .....	\$ 135
SC-069-IF	Vervet Monkey .....	\$ 135
SC-092-IF	Human, Adult Male .....	\$ 130
SC-123-IF	Bonobo .....	\$ 160
SC-137-IF	Rhesus Macaque .....	\$ 135
SC-183-IF	Human, Child 5-year-old .....	\$ 135
SC-211-IF	Human, Adult Female .....	\$ 130
SC-263-IF	Weeping Capuchin .....	\$ 135
SC-265-IF	Black Spider Monkey .....	\$ 135

## FEMORA

KF-001	Set of 10 .....	\$ 849
KO-036-F	<i>A. afarensis</i> "Lucy" (3 pcs) .....	\$ 145
KO-036-FA	<i>A. afarensis</i> "Lucy" (1 pcs) .....	\$ 128
KO-082	<i>Homo neanderthalensis</i> Neanderthal, Right .....	\$ 290
KO-188-F	Chimpanzee, Female, Right .....	\$ 85
KO-189-F	Chimpanzee, Female, Left .....	\$ 85
KO-193-F	Human, Modern Adult Female, Premier Example .....	\$ 72
KO-210-F	Mandrill Baboon .....	\$ 80
SC-002-F	Orangutan .....	\$ 90
SC-003-F	Chimpanzee, Male .....	\$ 80
SC-012-F	<i>Homo ergaster</i> , KNM-WT-15000 .....	\$ 135
SC-028-F	Gorilla .....	\$ 102
SC-047-F	Siamang .....	\$ 70
SC-092-F	Human, Adult Male .....	\$ 60
SC-116-F	Human, 5-year-old Archaic Child .....	\$ 65
SC-123-F	Bonobo .....	\$ 85
SC-183-F	Human, 5-year-old Child, Articulated .....	\$ 65
SC-187-71-F	Human, 14-16-month-old Child, Femur and Epicondyle (5 pcs, Right or Left) ....	\$ 70

## PELVISES (See website for complete list)

### ARTICULATED

KO-028-P	Gorilla .....	\$ 250
KO-081	Neanderthal .....	\$ 865
KO-123-P	Bonobo .....	\$ 215
KO-147-P	Siamang .....	\$ 180
KO-187-P	Chimpanzee, Female .....	\$ 225
KO-202-P	Orangutan .....	\$ 245
KO-210-P	Mandrill Baboon .....	\$ 225
KO-303-P	Chimpanzee, Male .....	\$ 225
KO-312-P	<i>Homo ergaster</i> KNM-WT-15000 .....	\$ 270
KO-093-P	Human, Adult Male .....	\$ 160
KO-116-P	Human, 5-year-old Archaic Child .....	\$ 175
KO-178-P	Human, Female, Pits of Parturition .....	\$ 175
KO-193-P	Human, Adult Female, Premier Example, .....	\$ 175
SC-183-P	Human, 5-year-old Child .....	\$ 175

### DISARTICULATED

KO-187-PD	Chimpanzee, Female .....	\$ 255
KO-036-P	<i>A. afarensis</i> "Lucy" Innominate .....	\$ 105
KO-036-PS	<i>A. afarensis</i> "Lucy" Innominate, Sacrum .....	\$ 190
SC-183-PD	Human, 5-year-old Child .....	\$ 175

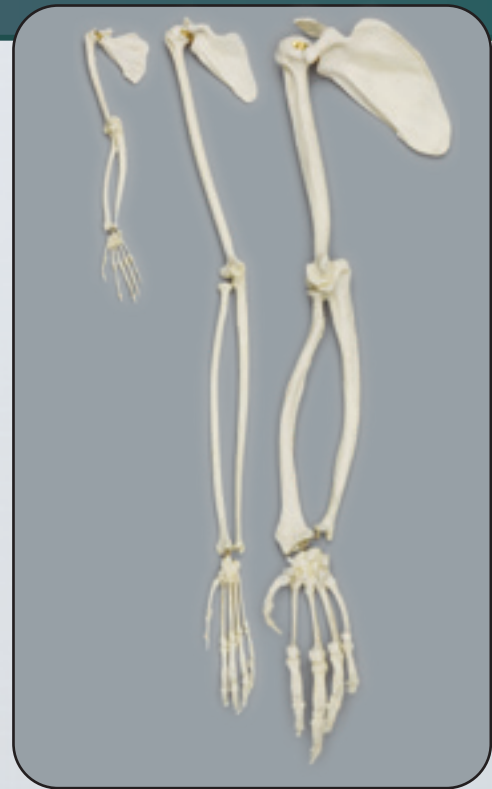
# Mammals: Primate Postcranial

## ARM ARTICULATIONS with Scapula and Articulated Rigid Hand

SC-002-67-AS	Sumatran Orangutan, Male .....	\$ 490
SC-003-67-AS	Chimpanzee, Male .....	\$ 490
SC-010-67-AS	Mandrill Baboon .....	\$ 490
SC-028-67-AS	Gorilla .....	\$ 490
SC-047-67-AS	Siamang .....	\$ 395
SC-069-67-AS	Vervet .....	\$ 395
SC-123-67-AS	Bonobo .....	\$ 490
SC-137-67-AS	Rhesus Macaque .....	\$ 395
SC-263-67-AS	Capuchin .....	\$ 395
SC-265-67-AS	Black Spider Monkey .....	\$ 395
SC-282-67-AS	Indri Lemur .....	\$ 435

Articulated arms are available with or without scapula.  
Arms and legs are available articulated or disarticulated.  
Disarticulated arms and legs include the disarticulated  
extremity (hand or foot).

See our website for complete list of products



## PRIMATE INTERMEMBRAL SETS: Humerus, Radius, Femur, Tibia

Available for all primates. For use in calculating forelimb, hindlimb, and long bone indices.

### Brachiator

SC-002-IM	Orangutan .....	\$ 295
SC-047-IM	Siamang (Pictured) .....	\$ 195

### Suspensory/Brachiator

SC-265-IM	Black Spider Monkey .....	\$ 190
-----------	---------------------------	--------

### Vertical Clinger/Leaper

SC-282-IM	Indri Lemur .....	\$ 245
-----------	-------------------	--------

### Small Vertical Clinger/Leaper

SC-095-IM	Senegal Bushbaby (with Calcaneus, Pictured) .....	\$ 138
-----------	--	--------

### Arboreal Quadruped and Vertical Clinger/Leaper

SC-097-IM	Common Marmoset (with Calcaneus) ...	\$ 148
-----------	--------------------------------------	--------

### Quadruped

SC-096-IM	Ring-tailed Lemur .....	\$ 190
SC-137-IM	Rhesus Macaque .....	\$ 190

### Arboreal Quadruped

SC-263-IM	Weeping Capuchin .....	\$ 190
-----------	------------------------	--------

### Terrestrial Quadruped

SC-010-IM	Mandrill Baboon .....	\$ 265
SC-069-IM	Vervet .....	\$ 190

### Knuckle Walking Quadruped

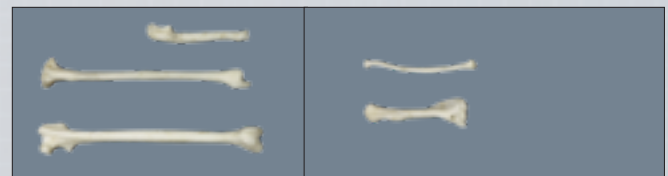
SC-003-IM	Chimpanzee (Pictured) .....	\$ 280
SC-028-IM	Gorilla (Pictured) .....	\$ 295



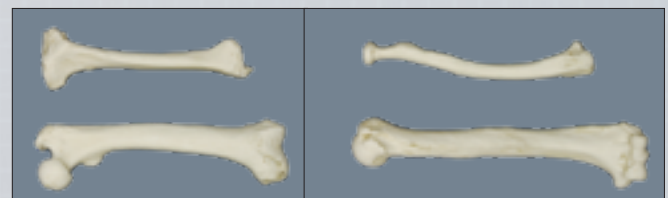
Siamang Intermembral Set



Chimpanzee Intermembral Set



Senegal Bushbaby (with Calcaneus)



Gorilla

# Hominids



## Bone Clones® Fossil Hominids

The Bone Clones® Hominid line is composed of discoveries from anatomically modern humans, archaic humans, early *Homo*, early hominins, and other hominids. As of the printing of this catalog, this line contains 75 skulls. The classifications of human ancestors are provided for general categorization of casts available, and we hope it will help place them in a timeline of human development.

A complete listing in numerical order of all 75 Bone Clones® Hominid skulls can be found on pages 26 and 27. The hominid skull graphics on pages 24, 26, and 27 are unidentified. For more information about this line and individual products, please see our website's Fossil Hominid Skulls category within our Fossil Hominid menu.

The casts in this line have been recreated by our team of anatomical sculptors using published osteological data and in conjunction with our anthropology consultants. It is always preferable to cast from original specimens—however, original specimens of hominins are rarely available. Each of our hominid recreations is researched and produced based on some or all of the following: the latest literature (descriptions and/or published measurements), input from the scientific community, full color and life-size photographs, or any combination thereof.

The recreated hominids offered in this series are high quality, artistic recreations that can be used by educators for classroom study and appreciated by the general public. They are not intended for advanced graduate work or for research purposes.



### Economy Hominin Crania

### Accessories

Introducing Bone Clones® economy versions of our most popular hominin crania which are designed to give educators affordable, high quality, highly detailed and durable replica hominins for hands-on study. Our resins capture fine details, and unlike materials such as plaster or hydrostone, are lightweight and shatter resistant. They are perfect for introductory level courses in anthropology and evolution.



**Storage Bag for Skulls**  
Soft gray flannel with braided cord and silk-screened Bone Clones logo. Fits all human, fossil hominid, and primate skulls, as well as select skeletal parts.  
18" L x 12" W  
**BA-100 ..... \$ 12.50**



**Plastic Carrying Case**  
Corrugated plastic skull case which requires easy four-flap assembly and handle insertion. Functional storage and carrying case at an economical price.  
10 ½" L, 7 ½" W, 8 ½" D  
**S-81 ..... \$ 32**



Shown here is a typical stand having a metal base and rod with a resin cradle, coated with thin rubber to prevent scratching and damage to paint on skull. Please note that the cradle is custom-made for each individual specimen. Color, shape, and price varies.



BH-005-EC  
*Homo erectus*

BH-002-EC  
*Homo habilis*

BH-001-EC  
*Australopithecus afarensis*



## Bone Clones® - Quality on Display



The appearance and detail of Bone Clones skulls and skeletons is so realistic and the material so durable that our replicas offer a viable alternative to natural bone, whether for museum displays, or instruction of human and animal osteology.

The scope and depth of our collection is impressive, representing hundreds of species. Museums continue to add our pieces to their collections, from fossil skeletons like the *Smilodon* and short-faced bear skeletons to primate skeletons like the gorilla, and a selection of endangered species.

In classroom settings, more and more educators from grades K-12 and up are choosing to enrich their curricula with Bone Clones® specimens, which provide valuable opportunities for students to experience hands-on learning.

### Bone Clones® on Exhibit

The variety of Bone Clones® replicas, their fidelity, and preservation of gross and fine detail has inspired museum directors and curators worldwide to create exhibits not previously possible. Bone Clones® can be found on display in the following institutions, to name a few:

Max-Planck Institut • Field Museum • AMNH (*New York*) • Apenheul Primate Park (*Netherlands*) • Amici del Museo di Scienze Naturali • Musee De La Civilisation (*Canada*) • Museo del Desierto (*Mexico*) • Museo Nacional de Ciencias (*Spain*) • National Museums Liverpool • Natural History Museum Vienna • Natural History Museum, London • Yale Peabody Museum of Natural History • Ashoro Museum of Paleontology • Croatian Natural History Museum • Hayashibara Museum of Natural Sciences • Maxwell Museum • Museum of Man • New York Hall of Science • California Academy of Sciences • Harvard Museum of Comparative Zoology • NHMLA (*Los Angeles*) • Royal Tyrrell Museum • Smithsonian Institution • Museum d'Histoire Naturelle (*France*) • Museo de la Plata (*Argentina*) • National History Museum (*Denmark*) • Peabody Museum of Archaeology • State Museum of Archaeology (*Germany*) • Australian Museum • Moravske Zemske Muzeum (*Czech Republic*) • Houston Museum of Natural Science • SBMNH (*Santa Barbara*) • Shaoxing Science & Technology Museum (*China*)



Shaoxing Science & Technology Museum (*China*)



Apenheul Primate Park (*Netherlands*)

# Fossil Hominids: Skulls

A complete listing in numerical order of all 75 Bone Clones® Hominid skulls is listed on these two pages (26-27). The hominid skull graphics are unidentified. For more information and photographs for each of the products in this line, please see our website's Fossil Hominid Skulls category within our Fossil Hominid menu.



BH-001	<i>Australopithecus afarensis</i> .....	\$ 270
BH-002	<i>Homo habilis</i> KNM-ER 1813, Cranium.....	\$ 208
BH-003	<i>Australopithecus robustus</i> SK-48, Cranium.....	\$ 208
BH-003-C	<i>Australopithecus robustus</i> SK-48.....	\$ 295
BH-004	<i>Homo heidelbergensis</i> Broken Hill 1 (Rhodesian Man), Cranium....	\$ 208
BH-006	<i>Australopithecus boisei</i> KNM-ER 406, Cranium.....	\$ 208
BH-007	<i>Australopithecus africanus</i> Sts 5 “Mrs. Ples”, Cranium.....	\$ 208
BH-007-C	<i>Australopithecus africanus</i> Sts 5 “Mrs. Ples”.....	\$ 295
BH-008	<i>Australopithecus aethiopicus</i> KNM-WT 17000, Cranium.....	\$ 208
BH-009-2	<i>Homo neanderthalensis</i> La Chapelle-aux-Saints.....	\$ 305
BH-010	<i>Homo habilis</i> OH 24, Cranium.....	\$ 208
BH-011	<i>Homo ergaster</i> KNM-ER 3733, Cranium.....	\$ 208
BH-012	<i>Homo ergaster</i> KNM-WT 15000 “Nariokotome Boy”.....	\$ 298
BH-013	<i>Homo rudolfensis</i> KNM-ER 1470, Cranium.....	\$ 205
BH-014	Pittdown Man, 1912 Fraud.....	\$ 270
BH-015	<i>Australopithecus boisei</i> OH 5 ( <i>Zinjanthropus</i> ), Cranium.....	\$ 208
BH-015-C	<i>Australopithecus boisei</i> OH 5 ( <i>Zinjanthropus</i> ).....	\$ 295
BH-016	<i>Australopithecus africanus</i> Taung Child.....	\$ 208
BH-017	<i>Homo sapiens</i> Cro-Magnon 1, Cranium.....	\$ 208
BH-017-C	<i>Homo sapiens</i> Cro-Magnon 1.....	\$ 295
BH-018	<i>Homo erectus</i> Sangiran 17, Cranium.....	\$ 225
BH-019	<i>Homo neanderthalensis</i> La Ferrassie 1.....	\$ 295
BH-020	<i>Kenyanthropus platyops</i> KNM-WT-40000, Cranium.....	\$ 280
BH-021-A	<i>Australopithecus afarensis</i> “Lucy” Light.....	\$ 295
BH-021-T	<i>Australopithecus afarensis</i> “Lucy” Dark.....	\$ 295
BH-022	<i>Homo heidelbergensis</i> Atapuerca 5.....	\$ 325
BH-023	<i>Proconsul africanus</i> .....	\$ 165
BH-024	<i>Sivapithecus indicus</i> .....	\$ 225
BH-025	<i>Aegyptopithecus zeuxis</i> .....	\$ 165
BH-026	<i>Australopithecus boisei</i> Female KNM ER 732, Cranium.....	\$ 208
BH-027	<i>Homo neanderthalensis</i> (Child) Teshik-Tash.....	\$ 295





# Fossil Hominids: Skulls

BH-029	<i>Sahelanthropus tchadensis</i> , Cranium .....	\$ 295
BH-030	<i>Homo neanderthalensis</i> Sawyer-Maley Reconstruction .....	\$ 478
BH-031	<i>Homo antecessor</i> , Cranium .....	\$ 235
BH-032	<i>Homo sapiens</i> Skhul 5 .....	\$ 318
BH-033-2	<i>Homo floresiensis</i> (Flores LB1) .....	\$ 338
BH-034	<i>Homo habilis</i> KNM-ER 1813, Sawyer-Deak Reconstruction .....	\$ 385
BH-035	<i>Australopithecus africanus</i> Sts 71, Cranium .....	\$ 198
BH-036	<i>Australopithecus africanus</i> Sts 52 .....	\$ 225
BH-038	<i>Homo erectus</i> , Peking Man, Tattersall-Sawyer Recreation .....	\$ 370
BH-039	<i>Ardipithecus ramidus</i> ARA-VP-6/500 .....	\$ 395
BH-040	<i>Homo neanderthalensis</i> Forbes Quarry Neandertal Gibraltar 1 .....	\$ 305
BH-041	<i>Homo heidelbergensis</i> (Bodo), Cranium .....	\$ 265
BH-041-C	<i>Homo heidelbergensis</i> (Bodo) .....	\$ 335
BH-043	<i>Saadanianus hijazensis</i> "SGS-UM2009-002", Cranium .....	\$ 165
BH-044	<i>Australopithecus afarensis</i> AL-444-2 .....	\$ 359
BH-045	<i>Homo sapiens idaltu</i> (Herto), Cranium .....	\$ 359
BH-046	<i>Australopithecus robustus</i> DNH 7 Drimolen .....	\$ 345
BH-047	<i>Homo sapiens</i> Kennewick Man .....	\$ 398
BH-048	<i>Homo sapiens</i> Oase (Sagittal Cut Skull without Reconstruction) .....	\$ 369
BH-049	<i>Homo sapiens</i> Oase Skull (with Reconstruction) .....	\$ 369
BH-050	<i>Homo neanderthalensis</i> Shanidar 1 .....	\$ 395
BH-051	<i>Homo neanderthalensis</i> Shanidar 5, Cranium .....	\$ 248
BH-053	<i>Homo erectus</i> Dmanisi "Skull 5" D4500 .....	\$ 389
BH-054	<i>Homo erectus</i> Dmanisi "Skull 4" D3444-D3900 .....	\$ 360
BH-055	<i>Homo erectus</i> Dmanisi "Skull 3" (D2700 Cranium, D2735 Jaw) .....	\$ 389
BH-056	<i>Homo erectus</i> Dmanisi "Skull 2" D2282 .....	\$ 389
BH-057	<i>Homo erectus</i> Dmanisi "Skull 1" D2280, Cranium .....	\$ 230
BH-058	<i>Australopithecus afarensis</i> Selam .....	\$ 295
BHK-001	<i>Australopithecus robustus</i> , SK-54 Swartkrans, Cranium Section with Punctures .....	\$ 165
BH-001-EC	<i>Australopithecus afarensis</i> Economy, Cranium .....	\$ 165
BH-002-EC	<i>Homo habilis</i> Economy, Cranium .....	\$ 165
BH-005-EC	<i>Homo erectus</i> Economy, Cranium .....	\$ 165



# Fossil Hominids: Skeleton & Postcranial

## *Australopithecus afarensis* "Lucy" A.L. 288-1

### *Australopithecus afarensis* "Lucy" A.L. 288-1

3.2 MYA. Discovered by D. Johanson in 1974 in Hadar, Ethiopia. Bone Clones reconstructed the articulated "Lucy" skeleton by using bones from the disarticulated version, which were based on the original find. In addition, by extrapolating from published data, relationships to other bones, and partial bone fragments, we created brass parts to indicate missing skeletal elements.

#### Articulated Skeleton, Walking

Note that the arms and legs of the skeleton in walking position are rigid and fixed.

(Stand and Base Included)

3' 7" Tall on an 18" Diameter Base

SC-036-AW ..... \$7,250.00

#### Articulated Skeleton, Standing

(Stand and Base Included)

3' 7" Tall on an 18" Diameter Base

SC-036-A ..... \$6,800.00

#### Disarticulated Skeleton

Skeleton is provided disarticulated along with a numbered photo to help identify the parts.

SC-036-D ..... \$2,800.00



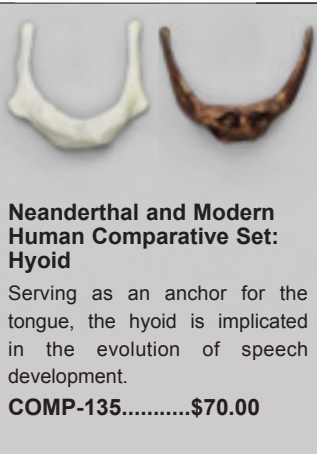
KO-036-C	Cranium Fragments (6 pcs.)..	\$ 145
KO-036-F	Femur (3 pcs.) .....	\$ 145
KO-036-FA	Femur, Assembled.....	\$ 128
KO-036-J	Jaw .....	\$ 110
KO-036-P	Innominate .....	\$ 105
KO-036-PA	Pelvis, Articulated.....	\$ 260
KO-036-PD	Pelvis, Disarticulated .....	\$ 275
KO-036-PS	Innominate and Sacrum .....	\$ 190
KO-036-S	Sacrum .....	\$ 92



Skeleton Articulations and Postcranial parts

# Fossil Hominids: Skeleton & Postcranial

## *Homo neanderthalensis* (Neanderthal)



### Neanderthal and Modern Human Comparative Set: Hyoid

Serving as an anchor for the tongue, the hyoid is implicated in the evolution of speech development.

**COMP-135.....\$70.00**



**KO-084**



### Neanderthal and Modern Human Comparative Set: Pelvis, Femur, Humerus

Modern *Homo sapiens*  
*Homo neanderthalensis*

An excellent, economical way to compare structures.

**COMP-107.....\$1,375.00**



SC-019-D	Disarticulated Skeleton.....	\$ 8,800	SC-019-A	Articulated Skeleton, Walking.....	\$ 13,900
KO-077	Atlas.....	\$ 90	KO-088	Patella.....	\$ 45
KO-078	Clavicle, Right.....	\$ 98	KO-089	Radius, Right.....	\$ 125
KO-079	Thorax Assembly, All Vertebrae & Ribs...\$	2,920	KO-090	Ulna, Right.....	\$ 120
KO-080	Scapula, Right.....	\$ 245	KO-091	Tibia and Fibula (Connected), Right.....\$	285
KO-081	Pelvis.....	\$ 865	KO-135	Hyoid.....	\$ 45
KO-082	Femur, Right.....	\$ 290	KO-084	Pelvis, Femur, Humerus Set.....	\$ 1,175
KO-083	Humerus, Right.....	\$ 145	KO-085	Skull (BH-030), Pelvis, Femur, Humerus.....\$	1,650
KO-086	Hand, Right, Partial Assembly.....	\$ 365	SC-019-PF	Pelvis, Femur, Left.....	\$ 1,150
KO-087	Foot, Right, Partial Assembly.....	\$ 365			

# Fossil Hominid: Cranial Sets, K-12 Education

**A** note about Bone Clones K-12 education category our “Fields of Study” menu. Bone Clones has specially selected casts (including some of the sets shown here) that would be an invaluable teaching tool in K-12 classrooms for STEM education (science, technology, engineering and mathematics), STEAM (STEM plus Arts), and the Next Generation Science Standards (NGSS). The products found here meet many of the NGSS standards for middle and high school science courses, including biological evolution and natural selection. More and more, teachers are using the STEM concepts and NGSS guidelines to teach students teamwork, stimulate creativity and attack real-life problem-solving skills to ensure their success in school and beyond.



**Set of 9 Fossil Hominid Skulls**  
 Nine milestone discoveries representing a timeline of, and the diversity in, human lineage. Discounted when bought as a set:

Includes:

- BH-002 *H. habilis*
- BH-007 *A. africanus*
- BH-009-2 *H. neanderthalensis*
- BH-012 *H. ergaster*
- BH-015 *A. (P.) Boisei*
- BH-016 *A. africanus*
- BH-020 *K. platyops*
- BH-021-T *A. afarensis*
- BH-038 *H. erectus*

**BH-KRO-1 .... \$ 2,259**



**Set of 7 Primate Skulls with Lesson Plan**

The lesson plan, intended for high school through introductory level college students, is designed to introduce students to hominid evolution and the scientific method through the use of research, data collection, and analysis using this set of seven primates.

**BH-KRO-7 ..... \$ 1,725**

Includes:

- BC-001 Gorilla
- BC-016 Human
- BC-003 Chimpanzee
- BH-001 *A. afarensis*
- BH-015-C *A. boisei*
- BH-019 *H. neanderthalensis*
- BH-038 *H. erectus*
- Teacher Guide
- Lab Activity
- 4 Calipers




**Set of 7 Skulls**  
 This set of 7 skulls is a full-size companion to our KAM SET-7, 1:2 scale Primate Skulls. (See p. 33)

Includes:

- BC-001 Gorilla
- BC-016 Human
- BC-003 Chimpanzee
- BH-001 *A. afarensis*
- BH-015-C *A. boisei*
- BH-019 *H. neanderthalensis*
- BH-038 *H. erectus*

**BH-KRO-3... \$ 1,895**



**Set of 6 Fossil Hominid Skulls**  
 This set of 6 skulls represents a range of fossil hominids based on age and historical importance. Ages range from 50,000 YA to 3.2 MYA.

**BH-KRO-2 ..... \$ 1,595**

Includes:

- BH-007 *A. africanus*
- BH-009-2 *H. neanderthalensis*
- BH-012 *H. ergaster*
- BH-015 *A. (P.) Boisei*
- BH-021-T *A. afarensis*
- BH-038 *H. erectus*

# Fossil Hominid: *H. ergaster*, *A. ramidus*

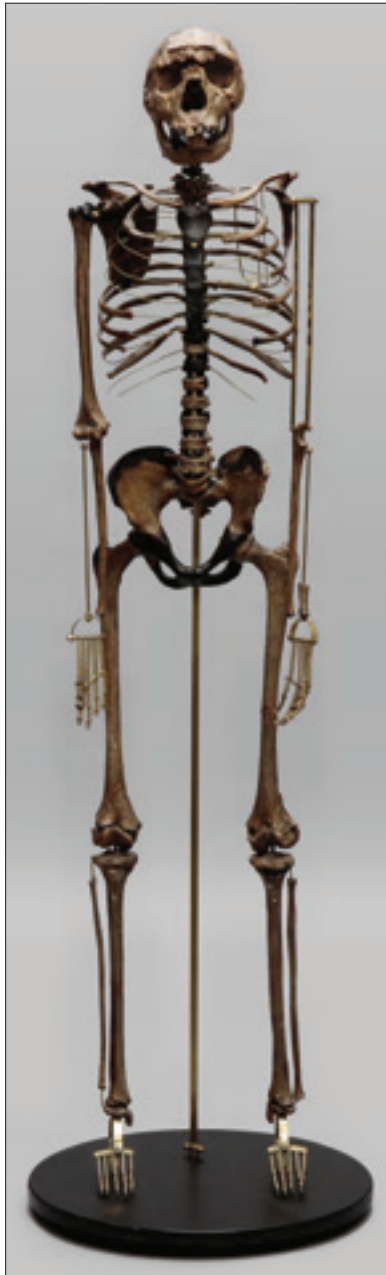
*Homo ergaster* Skeleton, KNM-WT 15000  
"Nariokotome Boy" or "Turkana Boy"



**Disarticulated**

1.6MYA. Discovered in Nariokotome, Kenya. The completeness of the skull allowed scientists to get accurate measurements of brain size. Many other skeletal parts were also recovered, giving anthropologists a great deal of information regarding body size, limb proportions, approximate age of death (early adolescence) and whether or not language was possible. Skeleton is provided disarticulated along with a numbered photo.

SC-012-D..... \$ 3,600  
SC-012-F Femur ..... \$ 135



**Articulated** (Stand and Base Included)  
60" Tall on 18" Diameter Base

1.6 MYA. Bone Clones reconstructed the "Nariokotome Boy" or "Turkana Boy" skeleton by using bones from the disarticulated version, which were based on the original find. In addition, by extrapolating from published data, relationships to other bones, and partial bone fragments, we reconstructed several vertebrae and the sternum, painting these black to differentiate them from the found bones. We used brass parts to indicate other missing bones.

SC-012-A..... \$ 6,200

*Ardipithecus ramidus*



***Ardipithecus ramidus* Skull**  
6" L, 5" W, 5" H BH-039....\$ 395

4.4 MYA. *Ardipithecus ramidus*

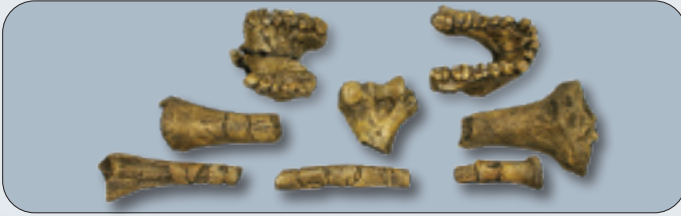
The partial skeleton ARA VP- 6/500 is considered by many to be the oldest skeleton of a supposed human ancestor. Tim White and team published their 1994 discovery in 2009. The pelvis indicates musculature for tree climbing and the ability of upright walking. The wrist bones indicate quadrupedal locomotion as opposed to knuckle walking.



SC-039-184-A Hand, Assembled .....\$ 320  
SC-039-184-D Hand, Disarticulated.....\$ 260  
SC-039-185-A Foot, Assembled.....\$ 320  
SC-039-185-D Foot, Disarticulated.....\$ 260  
SC-039-PD Pelvis, Disarticulated ....\$ 350

# Fossil Hominid

Cranial & Postcranial parts, Fossil Hominid and Neanderthal Tools



## Australopithecus anamensis

KO-136-SET	KNM-KP 271	Set of 8 Bones (Pictured) .....	\$395
KO-136-HD	KNM-KP-271	Left Distal Humerus .....	\$ 24
KO-136-Man	KNM-KP-29281	Mandible.....	\$ 115
KO-136-Max	KNM-KP-29283	Maxilla .....	\$ 115
KO-136-RC	KNM-ER-20419	Left Center Radius .....	\$ 24
KO-136-RD	KNM-ER-20419	Left Distal Radius .....	\$ 24
KO-136-RP	KNM-ER-20419	Left Proximal Radius ....	\$ 24
KO-136-TD	KNM-KP-29285B	Right Distal Tibia .....	\$ 40
KO-136-TP	KNM-KP-29285A	Right Proximal Tibia .....	\$ 60

## Homo neanderthalensis

KO-064	Shanidar 1	Humerus, Atrophied .....	\$ 89
--------	------------	--------------------------	-------

## Australopithecus africanus

KO-195-PD	STS 14	Pelvis, 3 pcs.....	\$260
-----------	--------	--------------------	-------

## Australopithecus afarensis

KO-392-KJ	AL 129-1	Knee Joint (2 pcs.).....	\$ 154
KO-393-MET	AL 333	4th Metatarsal.....	\$ 32

## Homo floresiensis

KO-395-A	(Flores)	Hand Articulated.....	\$289
KO-395-D	(Flores)	Hand Disarticulated.....	\$135
KO-396-A	(Flores)	Foot Articulated.....	\$289
KO-396-D	(Flores)	Foot Disarticulated .....	\$240

## Homo habilis

KO-196	OH-7	Jaw.....	\$165
KO-242	OH 8	Foot.....	\$175

## Homo erectus 1.89 MYA

KO-211	KNM-ER 1481	Femur .....	\$ 140
KO-211-KJ	KNM-ER 1481	Distal Portion of Femur, Partial Tibia .....	\$ 164
KO-211-PR	KNM-ER 1481	Femur and Partial Tibia ..	\$ 189

## Homo sapiens

KO-336-KJ	Human Adult Knee Joint, Disarticulated Left, (Partial Femur, Tibia) .....	\$ 72
-----------	--	-------

## Comparative Set of 4th Metatarsals

KO-390-4MT-SET	(Pictured)		
AL-333-160,	<i>A. afarensis</i> , Chimpanzee, Human, Gorilla.....	\$ 88	



## Fossil Hominid Tools

MS-99-SET	Set of 6 (MS-001 through MS-006) .....	\$ 419
MS-001	AR-5039 .....	\$ 95
MS-002	AR-4301 .....	\$ 72
MS-003	AR-5089 .....	\$ 72
MS-004	AR-5434 .....	\$ 72
MS-005	M-95 .....	\$ 58
MS-006	M-91 .....	\$ 72

## Fossil Hominid Hand Tools

MS-201-SET	Set of 6 (MS-201 through MS-206).....	\$ 369
MS-201	Spheroid Oldowan 1.75 mya.....	\$ 45
MS-202	Bifacial Chopper, Round Edge, Oldowan 1.5 mya.....	\$ 54
MS-203	Bifacial Chopper, Oldowan 1.5 mya .....	\$ 47
MS-204	Hand Axe, Oldowan 1.5 mya.....	\$ 97
MS-205	Cleaver, Acheulean 1.2 mya .....	\$ 74
MS-206	Hand Axe, Acheulean 1.2 mya .....	\$ 74

## Neanderthal Tools

MS-100-SET	Set of 21 (MS-101 through MS-121).....	\$ 1,039
MS-100-6-SET	Set of 6 (MS-101, -105, -112, -115, -117, -120) .....	\$ 319

## Individually:

<u>Awl</u>		
MS-101	.....	\$ 44
<u>Knife/Scraper</u>		
MS-102	.....	\$ 44
MS-103	.....	\$ 47
MS-104	.....	\$ 54
MS-105	.....	\$ 54
MS-106	.....	\$ 54
MS-107	.....	\$ 44
MS-108	.....	\$ 47
MS-109	.....	\$ 54
MS-110	.....	\$ 54
MS-111	.....	\$ 45
MS-112	.....	\$ 54
MS-113	.....	\$ 54
<u>Core</u>		
MS-114	.....	\$ 45
MS-115	.....	\$ 67
MS-116	.....	\$ 55

## Hammer

MS-117	.....	\$ 54
--------	-------	-------

## Axe

MS-118	.....	\$ 55
MS-119	.....	\$ 55
MS-120	.....	\$ 67
MS-121	.....	\$ 54

## Farpoint Clovis

MS-220	Point .....	\$ 97
--------	-------------	-------



# Comparative Evolution, Scale

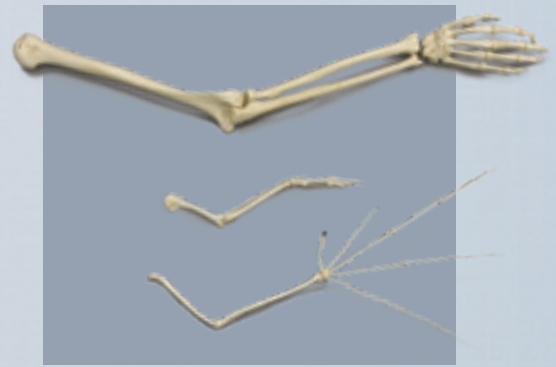


**Comparative Hand Evolution, Set of 4**  
COMP-144..... \$ 865

**Comparative Foot Evolution, Set of 4**  
COMP-145..... \$ 865

**Biological Evolution:**  
As vertebrates adapted to different environments and lifestyles, the form and function of their limbs, hands, and feet evolved to best serve them.

Much information can be gleaned from a comparative analysis of the hands, feet, and limbs of vertebrates. Subjects to be explored include: locomotion, convergent & divergent evolution, ecological niche & comparative anatomy.



**Homologous Structures: Forelimbs, Set of 3**  
COMP-146..... \$ 580

**Products Also Available Individually. See Website.**

## Half Scale Human Ancestry/Sex



Male African TSBC-110      Male Asian TSBC-253      Male European TSBC-107



Female African TSBC-178      Female Asian TSBC-149      Female European TSBC-133

**Set of 6 Half Scale Male & Female Skulls**  
TSCOMP-120..... \$ 656

**Set of 3 Half Scale Human Male Skulls**  
TSCOMP-121..... \$ 333

**Set of 3 Half Scale Human Female Skulls**  
TSCOMP-122..... \$ 333

**For full-scale (1:1) versions, see p. 38**

**Also Available Individually, \$ 115 Each**

## Half Scale Bone Clones® Hominids

We 3D scanned our full-sized skulls, printed them at half-scale, then meticulously prepared them for molding. The resulting cast—a perfect duplicate of the original Bone Clones® skull at half the scale—is then finely hand-finished. An affordable, compact solution for K-12 educators to give their students hands-on experience.

**Set of 4 Half Scale Fossil Hominid Skulls**  
*Ardipithecus ramidus*, *Australopithecus afarensis* "Lucy", *Homo ergaster* "Turkana Boy", *Homo neanderthalensis* "Shanidar 1"  
TSBH-COMP-1..... \$475.00

**Also Available Individually, \$125.00 Each**  
(For full-scale (1:1) versions, see pp. 26-27.)



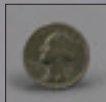
TSBH-039      TSBH-021-T      TSBH-012      TSBH-050

Full 1:1 scale *Homo neanderthalensis* Shanidar 1 Skull (BH-050, see p. 27) for size comparison only, not included.

## Half Scale Primate Set

**Set of 7 Primate Skulls, 1:2 scale, (Base Not Included)**  
KAM-SET-7 ..... \$ 590

**Base for Set of 7 Primate Skulls, 1:2 scale**  
24" L, 9" W, 1 1/4" H  
S-KAM-SET-7-2 ... \$ 95



KAM-01 *A. (P.) boisei*      KAM-02 *A. afarensis*      KAM-05 *H. erectus*      KAM-06 *H. neanderthalensis*      KAM-04 Gorilla      KAM-03 Chimpanzee      KAM-07 *H. sapiens*

**All Skulls Also Available Individually, \$ 89 Each**  
**For Full Scale Set See Page 28 BH-KRO-3**



**SAN DIEGO**  
**MUSEUM of MAN**  
*It's about people*

We are grateful to the San Diego Museum of Man for allowing us to select specimens for reproduction and granting us exclusive casting rights to these pieces from their valuable Hrdlička Paleopathology, Stanford-Meyer Osteopathology. A portion of sales goes to further their work.

## Pathology: Skulls

BC-193	Scaphocephalic .....	\$ 319
BC-197	Masculinized Female .....	\$ 309
BC-340	Hydrocephalic .....	\$ 385
BC-341	Acromegaly .....	\$ 365
BCD-279	Dwarf, Achondroplasia, Female .....	\$ 380
BCM-801	Down's Syndrome, Skull and Jaw, 66-year-old Female .....	\$ 330
BCM-804	Human Skull for Facial Reconstruction with Photo History .....	\$ 485

## Hrdlicka Collection: Cranial Pathology

BCH-807	Leishmaniasis Cranium.....	\$ 330
BCH-808	Syphilis Cranium (shown. right).....	\$ 330
BCH-809	Meningioma Cranium .....	\$ 330
BCH-810	Cranial Deformation Cranium .....	\$ 330
BCH-813	Cribræ Orbitalia, Partial Cranium .....	\$ 290
BCH-814	Button Osteoma Cranium .....	\$ 330
BCH-815	Porotic Hyperostosis Cranium .....	\$ 330
KOH-445	Auditory Exostosis, Left Temporal Bone ..	\$ 185

## Pathology: Skeletons

Human Female Dwarf Skeleton, Achondroplasia		
SCD-279-A	Articulated.....	\$ 6,800
SCD-279-D	Disarticulated .....	\$ 5,800

## Hrdlicka Collection: Postcranial Pathology

KOH-441	Ankylosing Spondylitis Vertebral Column .....	\$ 280
KOH-442	Tuberculosis Innominate and Sacrum.....	\$ 285
KOH-450	Mandible with Dental Abscessing .....	\$ 105

## Postcranial: Arthritic and Normal Comparative Lumbar Vertebrae

Disarticulated Vertebrae		
FO-105-AY	10 Comparative Lumbar Vertebrae (5 each: Arthritic and Normal) .....	\$ 440
FO-105-N	5 Lumbar Vertebrae (Normal) .....	\$ 220
FO-105-A	5 Lumbar Vertebrae (Arthritic) .....	\$ 220
FO-105-P	2 Comparative Lumbar Vertebrae (L-3: 1 each, Arthritic and Normal).....	\$ 78

## Display Sets on Stands Articulated

FO-105-SET	Set of 10 (Arthritic and Normal).....	\$ 375
FO-106	Arthritic Vertebrae (Pictured).....	\$ 38
FO-107	Normal Vertebrae .....	\$ 38

## Postcranial Pathology

### **Human Male European-American, 65-year-old**

FM-528	Manubrium with Fused Ossified Cartilage..	\$ 65
FM-529	Sacrum and L-5 fused.....	\$ 125
FM-530	L-4 Vert.....	\$ 44
FM-528-SET	Set of FM-528 through FM-530 (Listed Above)...	\$ 220

### **Diffuse Idiopathic Skeletal Hyperostosis**

FM-531	Ossified Thyroid .....	\$ 49
FM-532	Fused C-4 through T-3 and 2 Ribs .....	\$ 138
FM-533	Ossified Hyoid .....	\$ 44
FM-531-SET	.....	
Set of FM-521 through FM-533 (Listed Above).....		\$ 220

### **Pathological C-7 Vertebra, Cervical Ribs and Humeri**

KOM-801-SET		
	C-7 Vertebrae with One Rib Attached, One Loose Rib, 2 Humeri, .....	\$ 179
FO-110-SET		
	Vertebral Centrum Union Set, Age Series.....	\$ 329
FO-113	Child Vertebral Column and Sacrum, Scoliosis .....	\$ 490
FO-114	Sternum with Anomaly.....	\$ 70
KO-170	Femur with Osteoporosis .....	\$ 78
KO-170-SET		
	Two Femora: Osteoporotic and Normal.....	\$ 145



**Forensic Osteology products p. 45**  
**Additional examples of pathology and trauma**

## Stanford-Meyer Collection: Postcranial Pathology

KO-268	Sacrum with Spina Bifida Occulta .....	\$ 142
KO-273	Right Patella with Osteoarthritis.....	\$ 32
KO-443	Femur, Tibia and Fibula, Rickets .....	\$ 240
KO-444	Left Femur, Osteosarcoma .....	\$ 165
KO-445	Tibia Fracture with Sagittal Cut.....	\$ 130
KO-446	Tibia Bone Graft .....	\$ 120



# Human Trauma



## Trauma Skulls

BC-115	Trephinated.....	\$ 248
BC-152	Medium Caliber Gunshot Wound.....	\$ 319
BC-185	Machete Wound, Male (Pictured).....	\$ 385
BC-196	Shotgun Holes.....	\$ 319
BC-198	Roman Gladiator.....	\$ 385
BC-199	Spanish Conquistador.....	\$ 385
BC-200	Elongated, Female.....	\$ 278
BC-201	Elongated, Trephinated, Male.....	\$ 278
BC-202	22 Caliber Bullet Holes.....	\$ 340
BC-217	Hammer Blows.....	\$ 320
BC-222	Cradle Boarding.....	\$ 309
BC-303	Healed Blunt Force Trauma.....	\$ 309
BCD-323	22 Caliber Bullet Wound, with Calvarium Cut...\$	335
BCM-802	Shotgun Pellets Embedded in Bone, 39-year-old, Partial Cranium.....	\$ 259
BCM-803	Blunt Force Trauma Partial Skull.....	\$ 296
BCM-805	Facial Fractures (Eye Orbit, Bridge of Nose, Forehead), Blunt Force Trauma Cranium.....	\$ 296
BCM-806	Classic Entry-Exit Gunshot Wound Cranium....	\$ 296
FM-601	Hyperostosis Frontalis Interna Calvarium.....	\$ 95

## Hrdlicka Collection: Cranial Trauma

BCH-816	Mid-facial Blunt Force Trauma Cranium....	\$ 330
BCH-817	Sling Shot Wound Cranium.....	\$ 330
BCH-818	Sharp Force Trauma Cranium.....	\$ 339
BCH-819	Incomplete Trephination Cranium.....	\$ 330
BCH-811	Healed Frontal Bone Fracture Cranium with Inca Bone.....	\$ 330
BCH-812	Healed Parietal Bone Fracture Cranium....	\$ 330

## Non-human Forensic Reference

BC-246	2-Faced Calf Skull with Stand.....	\$ 675
FO-075	Black Bear Hand, Right Front.....	\$ 120
Comparative Pathology		
FO-401	Deer Jaws, Pair.....	\$ 115
FO-402	Goat Cannon Bones, Pair (Metatarsals, Pictured) ..	\$ 90
FO-403	Baboon Femora, Pair.....	\$ 115
FO-404	Coyote Tibia and Fibula, Pair.....	\$ 90



## Postcranial Trauma

### Human Male European 62-year-old

FM-501-SET	Multiple Healed Fractures, Set of 8 pcs. (FM-501 through FM-508 see below) .....	\$ 615
FM-501	Fracture, Healed Innominate (Right).....	\$ 95
FM-502	Fracture, Healed Innominate (Left).....	\$ 95
FM-503	Fracture, Healed Tibia (Left).....	\$ 85
FM-504	Fracture, Healed Tibia (Right).....	\$ 85
FM-505	Fracture, Healed Femur (Right).....	\$ 89
FM-506	Fracture, Healed Femur (Left).....	\$ 89
FM-507	Fracture, Healed Fibula (Right).....	\$ 65
FM-508	Fracture, Healed Fibula (Left).....	\$ 65

### Human Female European-American 39-year-old

FM-534-SET	Human Fracture Set Set of 5 (FM-534 through FM 538 see below) .....	\$ 320
FM-534	Femur (Right).....	\$ 79
FM-535	Femur (Left).....	\$ 79
FM-536	Sacrum.....	\$ 89
FM-537	Innominate (Right).....	\$ 49
FM-538	Innominate (Left).....	\$ 49

### Human Native American Female, Blunt Force Trauma

FM-540-SET	Set of 4 Postcranial Pieces (FM-540 and FM-541) .....	\$ 170
FM-540	Innominate.....	\$ 59
FM-541	Femur 3 pcs., (Left).....	\$ 111
FO-101	Rib with Bullet Embedded.....	\$ 40
FO-102	Surgically Altered Radius, Ulna, Innominate.....	\$ 280
FO-108	Femur from Amputee.....	\$ 89
FO-109	Remote Hip Fracture, Sectioned.....	\$ 89



## Stanford-Meyer Collection: Postcranial Trauma

(Bones from Left Side)

KO-269	Scapula with Healed Fracture.....	\$ 90
KO-270	Clavicle with Healed Double Fracture.....	\$ 85
KO-271	Ulna with Healed Parry Fracture.....	\$ 85
KO-272	Partial Femur with Healed Hip Fracture.....	\$ 129
KO-274	Tibia with Healed Fracture.....	\$ 90
KO-275	Tibia and Fibula, Amputation.....	\$ 129
KO-276	Tibia and Fibula, Amputation with Fusion.....	\$ 129
KO-277	Fibula with Healed Fractures.....	\$ 90

## Hrdlicka Collection: Postcranial Trauma

(Bones from Left Side)

KOH-446	Femur with Healed Comminuted Fracture ..	\$ 129
KOH-447	Humerus with Healed Distal Fracture.....	\$ 90
KOH-448	Tibia with Squatting Facet.....	\$ 90
KOH-449	Humerus with Amputation.....	\$ 75

# Human Adult Skeletons

Note: All Human Articulated Skeleton Prices Include Base and Stand

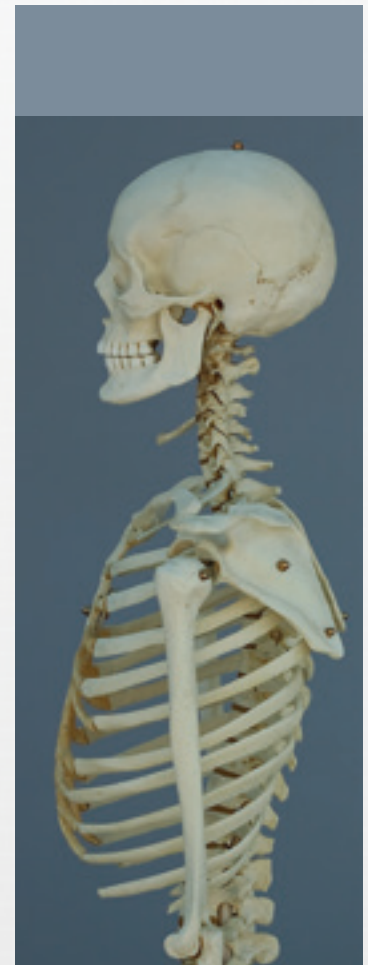


## Why Choose Bone Clones®?

Bone Clones, Inc., is the premier osteological replication company specializing in precise casts of skulls, skeletons, and individual bones of fossil and modern humans and animals. For the past 25 years, our casts have been used in museums, universities, medical schools and other educational institutions around the world.

Each step of our production process contributes to the overall outcome of our high quality products: careful selection of originals, meticulous prepping, molding, and casting (using resin we custom blend to duplicate subtle structures and minute scientific detail of natural and fossilized bone), precision hand-tooling, and hand-painting. Our diligent employees make every Bone Clone® replica "virtually indistinguishable from the original."™

Bone Clones® casts are ideal teaching aids for rigorous hands-on study in the classroom or laboratory. Skeletal details such as fossae, nutrient foramina, ridges, crests, grooves, rough areas, sutures and fissures are evident on the cast skeletons. Most human Bone Clones® skeletons are associated individuals, not composites. Bone Clones® resin is more durable than natural bone, which may be easily damaged with frequent handling, and lost, Bone Clones® parts can be easily replaced.



## Adult Human Skeletons

### Male Asian

SC-092-A	Articulated, Uses BC-253 Skull .....	\$ 2,495
SC-092-D	Disarticulated, BC-253 Skull .....	\$ 1,495
SC-092-DH	Half Skeleton, Disarticulated (Uses BC-253-C Calvarium Cut Skull) .....	\$ 989

### Female Asian

SC-211-A	Articulated, Uses BC-299 Skull .....	\$ 2,495
SC-211-D	Disarticulated, Uses BC-299 Skull .....	\$ 1,495
SC-211-DH	Half Skeleton, Disarticulated (Uses BC-299-C Calvarium Cut Skull) .....	\$ 989

### Male Asian Robust

SC-287-A	Articulated (Uses BC-287 Skull) .....	\$ 2,495
SC-287-D	Disarticulated .....	\$ 1,495
SC-287-DH	Half Skeleton, Disarticulated .....	\$ 990

### Female European

SCM-191-A	Articulated .....	\$ 2,595
SCM-191-D	Disarticulated .....	\$ 1,650
SCM-191-DH	Half Skeleton, Disarticulated, with Calvarium Cut Skull .....	\$ 1,095

### Male European

SCM-192-A	Articulated .....	\$ 2,595
SCM-192-D	Disarticulated .....	\$ 1,650
SCM-192-DH	Half Skeleton, Disarticulated, with Calvarium Cut Skull .....	\$ 1,095

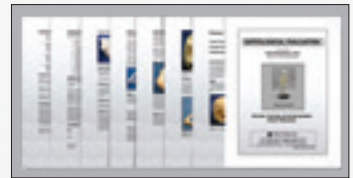
# Human Adolescent & Child Skeletons, Fetal Skeletons & Postcranial

## Osteological Evaluation Reports

Informative evaluation reports are available for most of our human skeletons, skulls and some postcranial items. These reports were prepared by Evan Matshes, M.D., Karen Ramey Burns, Ph.D., forensic anthropologist, or Tori D. Randall, Ph.D., biological anthropologist.

The reports contain information regarding general characteristics of the specimen, sections concerning the age, sex, and ancestral affiliation, with a clear indication of the non-metric analysis that went into the determination (or inability to make a determination) of such. Pathologic or traumatic features are also assessed.

A listing of available osteological evaluation reports can be found on our website under the **Human Anatomy category** and may be downloaded from our website.



See our website for more information.

## Adolescent & Child Skeletons

### 14-month-old (14-16 Months)

- SC-187-A Articulated .....\$ 2,150
- SC-187-D Disarticulated.....\$ 1,350
- SC-187-DH Half Skeleton, Disarticulated.....\$ 880

### 5-year-old (5-6 Years)

- SC-183-A Articulated.....\$ 2,150
- SC-183-D Disarticulated,  
Dentition Exposed.....\$ 1,350
- SC-183-DH Half Skeleton, Disarticulate,  
Dentition Exposed.....\$ 880

### 5-year-old Archaic (6,000 Years)

- SC-116-A Articulated .....\$ 2,250
- SC-116-D Disarticulated .....\$ 1,180

### 5-Year-Old Comparative Set

- COMP-183 Articulated.....\$ 3,600
- Includes: SC-183-A Modern and  
SC-116-A Archaic

### Adolescent

- SC-301-A Articulated.....\$ 3,225
- SC-301-D Disarticulated .....\$ 2,250
- SC-301-DH Half Skeleton, Disarticulated  
Calvarium Cut Skull...\$ 1,420
- FM-509-SET (Partial).....\$ 1,195  
(13-year-old European-American Male)



## Fetal Skeletons and Postcranial



### 32 Weeks

- SC-181-A Articulated .....\$ 689
- SC-226-A Flexible, Stand and Base Included.....\$ 1,195

### 40 Weeks (Full Term)

- SCM-186-A Assembled .....\$ 1,950
- SCM-186-D Disarticulated.....\$ 979

### Fetal Postcranial

- KO-340-CSET .....\$ 608
- Set of 53 Post Cranial Fetal Bones (All 8 Sets). See below.

- KO-325-SET 4 1/2 Months, Set of 3 Post Cranial Bones ..\$ 35
- KO-328-SET 4 Months, Set of 3 Postcranial Bones .....\$ 35
- KO-350-SET Full Term, Set of 8 Postcranial Bones.....\$ 95
- KO-358-SET 9 Months, Set of 8 Postcranial Bones .....\$ 95
- KO-366-SET 8 Months, Set of 8 Postcranial Bones .....\$ 95
- KO-374-SET 7 Months, Set of 7 Postcranial Bones .....\$ 95
- KO-381-SET 6 Months, Set of 8 Postcranial Bones .....\$ 95
- KO-389-SET 5 Months, Set of 8 Postcranial Bones .....\$ 95

# Human Basic Anatomy Skulls



## Child & Adolescent

## Adult

BC-256	4-month-old (3-6 Months).....	\$ 245
BC-187	14-month-old (14-16 Months) .....	\$ 245
BC-111	15-month-old (15-16 Months) .....	\$ 245
BC-209	16-month-old (16-18 Months) .....	\$ 245
BC-274	1-year-old (12-18 Months) .....	\$ 245
BC-280	1-year-old Calvarium Cut (12-18 Months).....	\$ 269
BC-216	1-1/2-year-old (14-22 Months) .....	\$ 245
BC-275	2-year-old (2-3 Years).....	\$ 245
BC-210	3-year-old (3-4 Years).....	\$ 245
BC-247	4-year-old (3 1/2-4 1/2 Years) .....	\$ 245
BC-116	5-year-old, Archaic (6,000 Years) .....	\$ 245
BC-183	5-year-old Mixed Dentition Exposed and Calvarium Cut (5-6 Years).....	\$ 310
BC-188	5-year-old Calvarium Cut (5-6 Years) .....	\$ 290
BC-189	5-year-old Mixed Dentition Exposed (5-6 Years) .....	\$ 275
BC-190	5-year-old (5-6 Years).....	\$ 245
BC-268	6-year-old (6-7 Years).....	\$ 245
BC-276	8-year-old (5-9 Years).....	\$ 245
BC-277	9-year-old (7.5-12.5 Years) .....	\$ 245
BC-135	12-year-old Dentition Exposed (11-13 Years).....	\$ 279
BC-270	13-year-old (13-14 Years).....	\$ 245
BC-301	Adolescent.....	\$ 245
BC-305	Adolescent, Calvarium Cut.....	\$ 295

BC-016	Male Asian .....	\$ 240
BC-031	Male Australian Aboriginal .....	\$ 259
BC-031P	Male Australian Aboriginal (Painted to Match Original) .....	\$ 285
BC-059E	Female Asian, Economy.....	\$ 145
BC-107	Male European .....	\$ 245
BC-110	Male African .....	\$ 245
BC-133	Female European .....	\$ 245
BC-149	Female Asian .....	\$ 245
BC-178	Female African-American .....	\$ 245
BC-203	Male African-American .....	\$ 245
BC-204	Male European, Elderly .....	\$ 295
BC-211	Female Asian .....	\$ 239
BC-213	Female American Indian .....	\$ 275
BC-253	Male Asian .....	\$ 245
BC-253-C	Male Asian Calvarium Cut.....	\$ 265
BC-287	Male Asian, Robust .....	\$ 269
BC-299	Female Asian .....	\$ 245
BC-302	Male Polynesian .....	\$ 299
BCM-891	Female European, from SCM-191 .....	\$ 265
BCM-892	Male European, from SCM-192.....	\$ 265
EZ-001	Magnetic Osteological Teaching Skull, 22-piece, Natural (Imported).....	\$ 359
EZ-002	Magnetic Osteological Teaching Skull, 22-piece, Color (Imported).....	\$ 389

## Comparative Skull Sets

## Stands

COMP-120-SET	Ancestry/Sex Set of 6 Male & Female Skulls: African, Asian, and European .....	\$1,395	S-COMP-120-SET .....	\$ 228
COMP-121-SET	Ancestry/Sex Set of 3 Male Skulls: African, Asian, and European .....	\$ 698	S-COMP-121-SET .....	\$ 105
COMP-122-SET	Ancestry/Sex Set of 3 Female Skulls: African, Asian, and European .....	\$ 698	S-COMP-122-SET .....	\$ 105

## Comparative Set of Jaws: Child through Adult

COMP-116 Jaws, Set of 5: 3 year old, 8 year old, 12 year old, Adolescent, Adult Male European..... \$ 359



# Human Basic Anatomy

## Fetal Skulls

BC-215	13 Weeks.....	\$ 84
BC-218	17 Weeks.....	\$ 84
BC-194	20 Weeks.....	\$ 84
BC-220	21 1/2 Weeks.....	\$ 84
BC-195	29 Weeks.....	\$ 84
BC-225	30 Weeks.....	\$ 84
BC-180	31 Weeks.....	\$ 84
BC-181	32 Weeks.....	\$ 84
BC-226	34 Weeks.....	\$ 84
BC-227	35 Weeks.....	\$ 84
BC-182	40 Weeks (Full Term).....	\$ 84
BC-281	40 Weeks Calvarium Cut (Full Term).....	\$ 205
BC-228	40 1/2 Weeks (Full Term).....	\$ 84
BCM-186-D	40 Weeks Disarticulated (Full Term).....	\$ 499

## Basic Anatomy Fetal Cranial Bones

Protective foam lined clear plastic case included

KO-186-001	Sphenoid (Full Term).....	\$ 95
KO-186-002	Ethmoid (Full Term).....	\$ 128
KO-186-009	Temporal (Full Term).....	\$ 136

## Basic Anatomy Fetal Cranial Bone Set

Protective foam lined clear plastic case included

KO-186-020-SET		
Full Term Cranial Set of 3 bones: .....		\$ 345
Sphenoid, Ethmoid, Temporal Bone		

## Fetal Skull Sets and Stands for Skull Sets

BC-182-SET	Set of 3 Skulls, Weeks: 31, 32, 40 .....	\$ 239
BC-281-SET	Set of 4 Skulls, Lesson Plan, Display Stand .....	\$ 512
Weeks: 20, 29, 35, 40 with Calvarium Cut		
BC-194-SET	Set of 5 Skulls with Display Stand.....	\$ 399
Weeks: 20, 29, 31, 32, 40		
BC-228-SET	Set of 12 Skulls with Display Stand.....	\$ 959
Weeks: 40 1/2, 40, 35, 34, 32, 31, 30, 29, 21 1/2, 20, 17, 13		

## Dental Anthropology System: Dental Plaques

Dental Anthropology System - Full set of Dental Plaques  
27 dental plaques, includes sturdy custom storage box  
with protective foam inserts

DAS-100-SET .....\$795

Dental Anthropology System - Individual Dental Plaques

DAS-01	Curvature Upper Incisor 1 .....	\$ 30
DAS-02	Shoveling Upper Incisor 1 .....	\$ 30
DAS-03	Shoveling Upper Incisor 2.....	\$ 30
DAS-04	Double Shoveling Upper Incisor.....	\$ 30
DAS-05	Tuberculum Dentale Upper Incisor 1 .....	\$ 30
DAS-06	Mesial Canine Ridge Upper Canine (Bushman's Canine).....	\$ 30
DAS-07	Distal Accessory Ridge Upper Canine .....	\$ 30
DAS-08	Distosagittal Ridge Upper Premolar (Uto-Aztec Premolar).....	\$ 30
DAS-09	Maxillary Premolar Mesial/Distal Accessory Ridge (MxPAR) Upper Premolar 1 & Upper Premolar 2.....	\$ 30
DAS-10	Metacone Cusp 3 Upper Molar .....	\$ 30
DAS-11	Hypocone Cusp 4 Upper Molar 2.....	\$ 30
DAS-12	Cusp 5 Upper Molar (Metaconule) .....	\$ 30
DAS-13	Carabelli's Trait Upper Molar .....	\$ 30
DAS-14	Parastyle Upper Molar.....	\$ 30
DAS-15	Shoveling Lower Incisor .....	\$ 30
DAS-16	Distal Accessory Ridge Lower Canine.....	\$ 30
DAS-17	Cusp Number Lower Premolar 1.....	\$ 30
DAS-18	Cusp Number Lower Premolar 2.....	\$ 30
DAS-19	Root Form Lower Premolar 1 (Tomes' Root).....	\$ 30
DAS-20	Anterior Fovea Lower Molar .....	\$ 30
DAS-21	Deflecting Wrinkle Lower Molar .....	\$ 30
DAS-23	Protostylid Lower Molar .....	\$ 30
DAS-24	Cusp 5 Lower Molar.....	\$ 30
DAS-25	Cusp 6 Lower Molar.....	\$ 30
DAS-26	Cusp 7 Lower Molar.....	\$ 30
DAS-27	Mid-Trigonid Crest Lower Molar .....	\$ 30
DAS-28	Tuberculum Dentale Upper Canine.....	\$ 30

## We thank the following institutions for use of original materials for casting

Academy of Natural Sciences of Philadelphia • Babiarz Institute of Paleontological Studies, Inc. • Black Hills Institute of Geological Research  
Charleston Museum • Harvard Museum of Comparative Zoology • Dr. Ralph Holloway • Maxwell Museum of Anthropology  
Natural History Museum of Los Angeles County • Philadelphia Zoo • San Diego Museum of Man • San Diego Natural History Museum  
San Diego Zoo • Santa Barbara Museum of Natural History • Museum of Osteology • Racoviță Institute of Speleology  
The Estate of Grover Krantz • The National Aquarium • Triebold Paleontology • U.C. Davis Body Donation Program • University of Nevada, Reno

**We** are always thankful for the numerous educators and consultants who enthusiastically offer Bone Clones invaluable pertinent advice so that we can make our products the best possible. There is no doubt that their professional interest and feedback make a great contribution to our company.

# Basic Anatomy

## Human Skeletons Postcranial

### Adult Human Skeleton, Postcranial

Prices and part numbers listed are from our SC-092 Male Asian Skeleton.  
(Each part is available from every human skeleton. Prices may vary.)

Hyoid .....	SC-092-02 .....	\$ 35
Clavicle .....	SC-092-01 .....	\$ 20
Scapula .....	SC-092-04 .....	\$ 85
Sternum .....	SC-092-05 .....	\$ 52
Humerus .....	KO-092-H .....	\$ 56
Radius .....	SC-092-61 .....	\$ 40
Ulna .....	SC-092-62 .....	\$ 40
Coccyx .....	SC-092-59A .....	\$ 15
Arm, Disarticulated w/ Semi-Articulated Hand .....	SC-092-67S .....	\$ 220
Arm, Articulated w/ Articulated Rigid Hand .....	SC-092-67-AS .....	\$ 393
Hand, Articulated Rigid .....	H-02-M .....	\$ 145
Hand, Articulated Premium Flexible .....	H-01-M .....	\$ 195
Hand, Disarticulated .....	H-04-M .....	\$ 150
Hand, Semi-Articulated .....	H-03-M .....	\$ 125
Vertebra, Cervical Single .....	SC-092-10 .....	\$ 20
Vertebra, Thoracic Single .....	SC-092-20 .....	\$ 20
Vertebra, Lumbar Single .....	SC-092-30 .....	\$ 20
Cervical Vertebrae, Set of 7 .....	SC-092-14C .....	\$ 132
Thoracic Vertebrae, Set of 12 .....	SC-092-26T .....	\$ 228
Lumbar Vertebrae, Set of 5 .....	SC-092-31L .....	\$ 95
Set of 3 Cervical, Thoracic, Lumbar .....	SC-092-10-SET .....	\$ 56
Vertebral Column .....	SC-092-31S .....	\$ 390
Rib T-1 .....	SC-092-33C .....	\$ 18
Rib T-6 .....	SC-092-33T .....	\$ 18
Rib T-12 .....	SC-092-33L .....	\$ 18
Full Ribs, Set of 24 .....	SC-092-56S .....	\$ 390
Innominate .....	SC-092-57 .....	\$ 75
Pelvis, Disarticulated .....	KO-093-PD .....	\$ 198
Pelvis, Articulated .....	KO-093-P .....	\$ 160
Femur .....	SC-092-F .....	\$ 60
Sacrum .....	SC-092-77 .....	\$ 48
Tibia .....	SC-092-69 .....	\$ 45
Fibula .....	SC-092-70 .....	\$ 36
Patella .....	SC-092-72 .....	\$ 18
Leg, Articulated w/ Articulated Rigid Foot .....	SC-092-75-A .....	\$ 333
Leg, Disarticulated w/ Disarticulated Foot .....	SC-092-75S .....	\$ 215
Foot, Articulated Rigid .....	F-02-M .....	\$ 145
Foot, Articulated Premium Flexible .....	F-01-M .....	\$ 195
Foot, Disarticulated .....	F-04-M .....	\$ 150
Foot, Semi-Articulated .....	F-03-M .....	\$ 129
Humerus, Scapula, Clavicle Set .....	SC-092-HSC .....	\$ 150



KO-322 Human Female  
Vertebral Column with Pelvis



Please visit our website for an extensive listing of available human skeletons and their associated postcranial elements and individual parts.

# Basic Anatomy

## Human Skeletons Postcranial



**FM-509-SET 13-Year-Old  
Partial Skeleton**

### Adolescent & Child Postcranial

#### Adolescent 13-year-old Male European-American

Partial Skeleton .....	FM-509-SET .....	\$ 1,195
Clavicle .....	FM-509 .....	\$ 38
Scapula and Epiphysis, 2 pcs.....	FM-511 .....	\$ 72
Sternum, 4 pcs .....	FM-510 .....	\$ 65
Humerus and Epiphysis, 3 pcs.....	FM-512 .....	\$ 98
Radius and Epiphysis, 3 pcs .....	FM-513 .....	\$ 56
Ulna and Epiphysis, 2 pcs .....	FM-514 .....	\$ 56
Ilium .....	FM-515 .....	\$ 53
Ischium and Pubis .....	FM-516 .....	\$ 56
Sacrum, 6 pcs.....	FM-517 .....	\$ 120
Femur and Epiphysis, 4 pcs .....	FM-518 .....	\$ 148
Tibia and Epiphysis, 3 pcs.....	FM-519 .....	\$ 148
Fibula and Epiphysis, 3 pcs.....	FM-520 .....	\$ 95
Patella.....	FM-521 .....	\$ 18
C-1 Vertebra .....	FM-522 .....	\$ 30
C-2 Vertebra .....	FM-523 .....	\$ 30
C-4 Vertebra .....	FM-524 .....	\$ 30
C-5 Vertebra .....	FM-525 .....	\$ 30
T-5 Vertebra.....	FM-526 .....	\$ 30
L-3 Vertebra.....	FM-527 .....	\$ 30

#### Child Miscellaneous

Innominate, 2 pcs. 9-year-old.....	KO-112 .....	\$ 90
Vertebral Column from C-1 through L-5, with Discs, Sacrum and Coccyx on Stand 5-year-old .....	KO-323 .....	\$ 620
Vertebral Column from C-1 through L-5, with Discs, Pelvis on Stand 5-year-old .....	KO-324 .....	\$ 690

#### 5-6-year-old Child Modern (from SC-183-D)

Hand, Articulated .....	KO-184 .....	\$ 105
Foot, Articulated.....	KO-185 .....	\$ 105
Humerus, Articulated .....	SC-183-61-H .....	\$ 52
Humerus, Disarticulated .....	SC-183-61-HD .....	\$ 72
Femur, Articulated.....	SC-183-F .....	\$ 65
Femur, Disarticulated.....	SC-183-FD .....	\$ 74
Innominate .....	SC-183-I .....	\$ 60
Pelvis, Articulated .....	SC-183-PD .....	\$ 175
Pelvis and Femur.....	SC-183-PF.....	\$ 225
Sacrum .....	SC-183-S .....	\$ 52
Vertebral Column, All 24 vertebrae.....	SC-183-24 .....	\$ 390

#### 5-6-year-old Child Archaic (from SC-116-D)

Tools, Found Near Archaic Child Skeleton .....	KO-041 .....	\$ 105
Hand, Articulated .....	KO-116 .....	\$ 105
Pelvis .....	KO-116-P .....	\$ 175
Foot, Articulated.....	KO-117 .....	\$ 105
Femur .....	SC-116-F .....	\$ 65
Humerus .....	SC-116-H.....	\$ 52



Please visit our website for an extensive listing of available human skeletons and their associated postcranial elements and individual parts.

# Human Basic Anatomy & Physical Therapy

## Cranial & Postcranial Elements, Comparative Child Skeletons

### Cranial

KO-164-I	Adult Male Tooth .....	\$ 9. <sup>50</sup>
KO-164-SET	Adult Male Set of 32 Teeth .....	\$ 305
KO-247-SET	Child Deciduous Set of 20 Teeth on Base (4-Year-Old) .....	\$ 298
COMP-105	Adult Comparative Maxillae, Set of 3: African, Asian, European .....	\$ 168
KO-320	Temporal Bone, Hinged .....	\$ 220

### Postcranial

#### Vertebral Column

KO-249	Cervical Vertebrae (Occipital to C-7 on base) .....	\$ 210
KO-321	Female (C-1 through L-5, Discs, Sacrum, Coccyx) .....	\$ 620
KO-322	Female (C-1 through L-5, Discs, Pelvis) .....	\$ 690

#### Humerus

FM-406	Female, African .....	\$ 65
--------	-----------------------	-------

#### Pelvis

KO-S03	Female (1:4 Scale) .....	\$ 30
FO-103-P	Male Asian, Assembled .....	\$ 159
FO-103-PD	Male Asian, Disarticulated .....	\$ 205
FO-103-S	Male Asian, Sacrum Only .....	\$ 60

#### Femur

FM-401	Male, African .....	\$ 69
FM-402	Female, African .....	\$ 69
SC-092-F	Male, Asian .....	\$ 60
SC-211-F	Female, Asian .....	\$ 58
SCM-192-21	Male, European .....	\$ 65
SCM-191-21	Female, European .....	\$ 65

#### Hand

LC-17	Male Hand Life Cast (Right) .....	\$ 159
-------	-----------------------------------	--------



KO-178-P



KO-178-PD

### Adult Economy Sets

#### Skull, Pelvis, Femur, Humerus

COMP-101	Male .....	\$ 370
COMP-102	Female .....	\$ 370

#### Female, African-American

#### Skull, Pelvis, Humerus and Tibia

COMP-109	.....	\$ 370
----------	-------	--------

### Bone Box Kits in Carry Case



Each kit includes skull, long bones, fifth rib, key vertebrae, rigidly articulated hand and foot, hyoid, clavicle, scapula, sternum, innominate, sacrum, coccyx, patella. (Paired bones from left side only.)

COMP-110-F	Female (Shown) ...	\$ 775
COMP-110-M	Male .....	\$ 775
COMP-110-C	Child .....	\$ 790

### Adult African-American Female

KO-178-FA	Fibula .....	\$ 48
KO-178-H	Humerus Left .....	\$ 60
KO-178-R	Radius, Left .....	\$ 45
KO-178-T	Tibia, Left .....	\$ 44
KO-178-U	Ulna, Left .....	\$ 44

#### Pelvis, Pits of Parturition

KO-178-P	Articulated .....	\$ 175
KO-178-PD	Disarticulated .....	\$ 198

#### Innominate

KO-178-PL	Left .....	\$ 80
KO-178-PR	Right .....	\$ 80

#### Sacrum with Attached Coccyx

KO-178-S	.....	\$ 54
----------	-------	-------

### Adult Female Premier

KO-193-F	Femur .....	\$ 72
KO-193-H	Humerus .....	\$ 68

#### Pelvis

KO-193-P	Articulated .....	\$ 175
KO-193-PD	Disarticulated .....	\$ 198
KO-193-PF	Pelvis, Femur .....	\$ 235
KO-193-S	Sacrum .....	\$ 54

### 5-year-old Child

#### Modern and Archaic (6,000 Years)

#### Two Articulated Skeletons on Base and Stand

COMP-183	.....	\$3,600
----------	-------	---------

#### Economy Skull, Pelvis, Femur, Humerus

COMP-103	Modern .....	\$ 349
COMP-103-A	Archaic .....	\$ 349

#### 2 each: Pelvis, Femur, Humerus

COMP-106	.....	\$ 450
----------	-------	--------

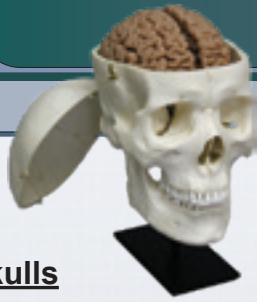
## Physical Therapy Anatomy Sets

KO-330	Spondylolisthesis, Dynamic Model .....	\$ 395
KO-331	Shoulder Joint (Scapula, Clavicle, Partial Humerus), Left, Human Adult .....	\$ 158
KO-332	Hip Joint (Innominate and Partial Femur), Left, Human Adult .....	\$ 158
KO-333	Knee Joint (Partial Femur, Tibia, Fibula, Articulated), Left, Human Adult .....	\$ 148
KO-334	Flexible Foot Joint (Premium Flex Foot, Partial Tibia and Fibula), Left, Human Adult .....	\$ 260
KO-334-AJ	Ankle Sprain Model .....	\$ 395
KO-335	Flexible Hand Joint (Premium Flex Hand, Partial Radius and Ulna) Left, Human Adult .....	\$ 260
KO-337	Elbow Joint (Partial Humerus, Radius and Ulna) Left, Human Adult .....	\$ 129
KO-338-KB	Premium Hand, Beauchene Style, Human Adult .....	\$ 225
KO-339-KB	Premium Foot, Beauchene Style, Human Adult .....	\$ 225
SC-211-A	Human Female Asian Skeleton, Articulated .....	\$ 2,495
SC-211-D	Human Female Asian Skeleton, Disarticulated .....	\$ 1,495
SC-211-DH	Human Female Asian Half Skeleton, Disarticulated, with Calvarium Skull .....	\$ 989
COMP-110-F	Bone Box Kit, Female, Left Side Only, Box Included, 24 Bones, See Website for Details .....	\$ 775
TB-A100	Economy Skeleton, Vinyl, on stand, Imported (Not Produced by Bone Clones, Inc.) .....	\$ 390



# Human Advanced Anatomy

## Skulls, Cranial Elements, Postcranial Elements



### Skulls

#### Calvarium Cut

BC-092	Male Asian.....	\$ 279
BC-092-SET	Male Asian (with Brain, on Stand, Pictured) .....	\$ 465
BC-150	Female European .....	\$ 295
BCM-891-C	Female European .....	\$ 289
BC-212	Male European .....	\$ 295
BCM-892-C	Male European.....	\$ 289
BC-293	Male European (Numbered with Legend).....	\$ 335
BC-150-212	Male and Female European .....	\$ 555
BC-305	Adolescent .....	\$ 295
BC-188	Child 5-year-old (5-6 Years).....	\$ 290
BC-183	Child 5-year-old Dentition Exposed (5-6 Years).....	\$ 310
BC-281	Fetal 40 Weeks.....	\$ 205

#### Calvarium Cut 7-piece Study Skull

BC-219	Female European .....	\$ 690
BC-224	Female European, Color-Coded .....	\$ 750

#### Half Sagittally Cut

BC-267-H	Natural Color .....	\$ 370
BC-267-H-BR	Natural Color with Brain (Stand Included) ...	\$ 470
BC-267-HP	Color-Coded .....	\$ 470
BC-267-HP-BR	Color-Coded with Brain (Stand Included).....	\$ 570

#### Exposed Dentition

BC-135	Child 12-year-old (11-13 Years) .....	\$ 279
BC-183	Child 5-year-old Calvarium Cut (5-6 Years) ..	\$ 310

BC-345	Craniometric Landmark Skull.....	\$ 475
--------	----------------------------------	--------

### Cranial Elements

KO-320	Temporal Bone (Hinged).....	\$ 220
KO-234-SET	Ossicles, Set of 6 (Left and Right) .....	\$ 90
KO-236-SET	Ossicles, Set of 6 (14 to 1 scale, Left and Right)...	\$ 155
KO-092E	Endocast (from BC-092).....	\$ 155

#### Brains

KO-092	Brain (Fits in BC-092 and BC-212) .....	\$ 205
KO-510	Brain (Fits in BC-150, Female European) .....	\$ 205
KO-515	Brain, Coronal Sections (7 pcs. with Lesson Plan) .	\$ 775

### Postcranial Elements

KO-249	Cervical Vertebrae Assembly on Base (Occipital to C-7).....	\$ 210
--------	---	--------

#### Vertebral Columns

KO-315	Male, with Magnetic Pelvis (Separable Innominates and Coccyx. Stand Included).....	\$ 690
KO-321	Female (C-1 through L-5 with Discs, Sacrum, and Coccyx. Stand Included).....	\$ 620
KO-322	Female (C-1 through L-5 with Discs, Pelvis. Stand Included).....	\$ 690

#### Pelves

KO-316	Male, Magnetic (Separable Innominates and Coccyx. Stand Included).....	\$ 260
KO-505-FLEX	Male, Detachable (Separable innominates, sacrum and L5, Flexible Coccyx).....	\$ 259

### Hands

#### Premium Beauchene Style

KO-338-KB Adult .....	\$ 225
-----------------------	--------

#### Premium Magnetic Style

KO-211-MH Adult .....	\$ 229
-----------------------	--------

#### Articulated Premium Flexible

H-01-F	Adult Female Hand.....	\$ 195
H-01-M	Adult Male Hand .....	\$ 195

#### Articulated Rigid

H-02-F	Adult Female Hand.....	\$ 145
H-02-M	Adult Male Hand .....	\$ 145
SC-092-184-LOC		

Hand, Articulated, in Relaxed Position, with Brass Stand \$ 180

#### Semi-articulated

H-03-F	Adult Female Hand.....	\$ 125
H-03-M	Adult Male Hand .....	\$ 125

#### Disarticulated

H-04-F	Adult Female Hand.....	\$ 150
H-04-M	Adult Male Hand .....	\$ 150

#### Printed from CT Scan

KO-391	Skeletal Hand, Companion to LC-17.....	\$ 155
--------	--	--------

### Feet

#### Premium Beauchene Style

KO-339-KB Adult .....	\$ 225
-----------------------	--------

#### Premium Magnetic Style

KO-211-MF Adult .....	\$ 229
-----------------------	--------

#### Articulated Premium Flexible

F-01-F	Adult Female Foot .....	\$ 195
F-01-M	Adult Male Foot.....	\$ 195

#### Articulated Rigid

F-02-F	Adult Female Foot .....	\$ 145
F-02-M	Adult Male Foot.....	\$ 145

#### Semi-articulated

F-03-F	Adult Female Foot .....	\$ 129
F-03-M	Adult Male Foot.....	\$ 129

#### Disarticulated

F-04-F	Adult Female Foot .....	\$ 150
F-04-M	Adult Male Foot.....	\$ 150

# Advanced Anatomy

## Human Medical Study Skulls, Cranial Bones, Brain

Our medical study skull shows all the foramina, canals, sutures and fine details of individual cranial bone of a real skull. Ideal for advanced study, foramina are bristle patent, making student exploration of perforating cranial nerve branches and blood vessels possible. Available are the completely disarticulated version with 32 removable teeth and the articulated version, cradled on a stand, with removable parietal bones giving access to the interior of the cranium.



BC-191-A



BC-191-D

### Human Medical Skull: BC-191

This skull of a probable young adult female is finely detailed, showing all the foramina, canals, sutures and minute details of a real skull. **A report by Dr. Boaz titled "Osteological Tracing of Cranial Nerves" is available for print and download.**

#### Articulated (Shown Upper Left)

in Premium Foam-lined Case, Stand Included

BC-191-A 4 Part Skull: All Teeth are Removable..... \$ 1,350

#### Disarticulated (Shown Upper Right)

in Premium Foam-lined Case

BC-191-D 28 Part Skull: Partial Mandible and Maxilla with 32 Removable Teeth ..... \$ 1,150

#### Set of 3 Bones

in Separate Plastic Cases

KO-191-020-SET Sphenoid, Ethmoid, Temporal ..... \$ 395  
 KO-110-SET Set of 11 Primate Hyoids ..... \$ 385  
 KO-111-SET Set of 5 Human Hyoids..... \$ 165

### Individual Bones

KO-191-001	Sphenoid, Plastic Case Included .....	\$ 150
KO-191-002	Ethmoid, Plastic Case Included .....	\$ 135
KO-191-003	Vomer .....	\$ 20
KO-191-004	Interior Nasal Conchae, Left and Right ...	\$ 20
KO-191-005	Lacrimals, Left and Right.....	\$ 20
KO-191-006	Palatines, Left and Right .....	\$ 29
KO-191-007	Nasals, Left and Right .....	\$ 16. <sup>50</sup>
KO-191-008	Zygomatics, Left and Right.....	\$ 20
KO-191-009	Temporal, Left, Plastic Case Included .....	\$ 142
KO-191-010	Temporal, Right, Plastic Case Included .....	\$ 142
KO-191-011	Maxilla, Left.....	\$ 55
KO-191-012	Maxilla, Right.....	\$ 55
KO-191-013	Parietal, Left .....	\$ 55
KO-191-014	Parietal, Right.....	\$ 55
KO-191-015	Occipital .....	\$ 45
KO-191-016	Frontal.....	\$ 114
KO-191-017	Mandible.....	\$ 77
KO-191-018	Teeth, Set of 32 in Base .....	\$ 298
KO-191-019	Wormian Bones (4).....	\$ 28

Bone Clones, Inc. has produced a collection of medical quality casts especially for educators and practitioners in the medical community. We mold and cast only from first quality originals that meet our exacting criteria (in terms of size, dentition, age, and general condition of the bone elements). This process, coupled with our custom-formulated resin, allows us to produce replicas that reveal realistic, accurate detail.

Our collection includes medical quality skulls (e.g., calvarium, color-coded 7-piece, numbered), skeletons (from fetal to adult), cranial bones (e.g., temporal, ethmoid, ossicles) postcranial bones (e.g., pelvis, joints, vertebral columns, teeth, feet, hands), and sets. See page 43 for additional products.



KO-505  
See Page 43



BC-267-HP-BR See  
Page 43

# Human Forensic Osteology

## FORENSIC OSTEOLOGY

BC-KIM-1	Forensic Anthropology K12 Set.....	\$ 3,825
BC-KIM-2	Forensic Anthropology K12 Set, Geographic Ancestry Segment .....	\$ 1,650
BC-KIM-3	Forensic Anthropology K12 Set, Stature Estimation Segment .....	\$ 650
BC-KIM-4	Forensic Anthropology K12 Set, Sex Estimation Segment.....	\$ 2,050
COMP-101	Economy Set Male: Asian, Skull, Pelvis, Femur, Humerus .....	\$ 370
COMP-102	Economy Set Female: Asian, Skull, Pelvis, Femur, Humerus .....	\$ 370
COMP-103	Economy Set: Skull, Pelvis, Femur, Humerus, 5-year-old Child, Modern .....	\$ 349
COMP-103-A	Economy Set: Skull, Pelvis, Femur, Humerus, 5-year-old Child, Archaic (6,000 Years).....	\$ 349
COMP-104	Forensic Primary Set .....	\$ 1,425
COMP-105	Comparative Human Maxillae, Set of 3: African, Asian, European .....	\$ 168
COMP-106	Human Child Comparative Set: Pelvis, Femur, Humerus, 5-year-old Child, Modern and Archaic (6,000 Years) .....	\$ 450
COMP-109	Economy Comparative Set African-American Female: Skull, Pelvis, Humerus and Tibia .....	\$ 370
COMP-110-C	Bone Box Kit, Child, Left Side Only, Box Included, See Website for Details .....	\$ 790
COMP-112	Comparative Economy Set African-American Female: Skull, Pelvis, Femur, Humerus.....	\$ 370
COMP-113	Comparative Economy Set Asian Male: Skull, Pelvis, Femur, Humerus .....	\$ 370
COMP-114	Forensic Osteology Set with Lesson Plan .....	\$ 1,575
COMP-115	Comparative Bone Scaling, Set of 12 Bones .....	\$ 749
COMP-117	Human Femur Growth Set: Fetal, 14-16 month, Child, Adolescent, Adult .....	\$ 325
COMP-118	Human Sacrum Growth Set: Fetal, 14-16 month, Child, Adolescent, Adult .....	\$ 325
COMP-120-SET	Human Male and Female Skulls, Set of 6: African, Asian and European.....	\$ 1,395
COMP-121-SET	Human Male Skulls Set of 3: African, Asian and European .....	\$ 698
COMP-122-SET	Human Female Skulls Set of 3: African, Asian and European.....	\$ 698
COMP-183	Human Child Skeletons 5-year-old Comparative Set, Modern and Archaic (6,000 Years) .....	\$ 3,600
COMP-M-405-SET	Economy Set Male: European, Skull, Pelvis, Femur, Humerus, All from SCM-192 European Male Skeleton ....	\$ 375
COMP-M-406-SET	Economy Set Female: European, Skull, Pelvis, Femur, Humerus, All from SCM-191 European Female Skeleton ..	\$ 375
COMP-M-407-SET	Comparative Set Human Adult Male European: Radius, Ulna, Tibia, Fibula .....	\$ 179
COMP-M-408-SET	Comparative Set Human Adult Female European: Radius, Ulna, Tibia, Fibula .....	\$ 179
KE-101	Kemper Aluminum Calipers.....	\$ 12
KO-164-SET	Human Male Teeth, Set of 32, Adult.....	\$ 305
KO-247-SET	Set of 20 Deciduous Teeth, on Base, from 3 1/2-year-old Child, BC-247 .....	\$ 298
KOM-804-SET	Skull Trauma Set of Six Fragments.....	\$ 195
WA-101	Vernier Plastic Metric Caliper 13cm .....	\$ 10.75



### COMP-114

Created to introduce the student to human osteology. While focused on forensic anthropology, this collection will be applicable to a broad range of concepts in biological anthropology, biomechanics and comparative anatomy. Included is a 10 page lesson plan written by our Research Specialist, which will guide one through the basic methods of skeletal identification, including detailed tables on sex determination, ancestry assessment, age estimation, stature assessment and a descriptive analysis of gunshot wound trauma. Also included is a Human Skeletal Features handout, which defines skeletal directional terminology and outlines important skeletal features in the human skeleton.

Aardvark.....	9	Crocodile.....	11, 13	<i>Hoplophoneus</i> .....	7
Accessories.....	24	Crocodile, Fossil.....	11	Hornbill.....	3
Achondroplasia.....	34	Cro-Magnon.....	26	Horns, Rhinoceros.....	8
Advanced Anatomy.....	43	Crow.....	3-4, 14	Horse.....	9, 14
<i>Aegyptopithecus zeuxis</i> .....	26	Cuckoo.....	3	Hrdlicka Collection.....	34-35
Albatross.....	2-3	Deer.....	8-9, 14	Human Adolescent.....	37-38
Alligator.....	11, 13-14	Dental Anthropology.....	14, 39	Human Advanced Anatomy.....	43-44
<i>Allosaurus</i> .....	12	<i>Dinictis</i> .....	7	Human Child.....	37-38
Amphibian.....	13	Dinosaur.....	12	Human Cranial Elements.....	42-45
Anaconda.....	13	Dmanisi <i>Homo erectus</i> .....	27	Human Fetal.....	37, 39
Anteater.....	9, 12	Dog.....	6, 14	Human Medical Study Skull.....	44
Anthropology, Dental.....	14, 39	Dolphin.....	5, 14	Human Pathology.....	34
<i>Apatosaurus</i> .....	12	Dove.....	4	Human Skulls.....	34-35, 38-39, 43
Archaeology.....	3, 14-15	Duck.....	4	Hummingbird.....	3
<i>Ardipithecus ramidus</i> .....	27, 31, 33	Dugong.....	5	Hyena.....	6
Armadillo.....	9-10	Eagle.....	2-4, 12, 14	Hyoids, Human.....	40
Arms, Human.....	33, 40-41	Echidna.....	5	Hyoids, Non-human Primate.....	18
Arms, Non-human Primate.....	23	Economy Series.....	8	Hyrax.....	10
Arthritis.....	34	Economy, Fossil Hominid.....	24	Ibis.....	3
<i>Australopithecus aethiopicus</i> .....	26	Economy, Human Sets.....	42	Indri Lemur.....	17, 23
<i>Australopithecus afarensis</i> .....	22, 26-28, 32	Egg, Platypus.....	5	Jackrabbit.....	8
<i>Australopithecus africanus</i> .....	26-27, 32	Eggs, Bird.....	3-4	Jaguar.....	6, 12
<i>Australopithecus anamensis</i> .....	32	Egret.....	4	Javelina.....	8
<i>Australopithecus boisei</i> .....	26, 32	Elephant.....	11	Jaws, Ray.....	13
<i>Australopithecus robustus</i> .....	26-27	Elephant Bird.....	2-3	Jaws, Shark.....	13
Aye-aye.....	16-17	Endocasts, Human.....	43	Jay.....	3-4
Babirusa.....	9, 11	Endocasts, Non-human Primate.....	18	Joints, Non-human Primate.....	18
Baboon.....	17, 22	<i>Eusmilus sicarius</i> .....	7	K-12 Education.....	19, 30, 33
Baculum.....	5, 14	Falcon.....	2-4, 12	Kangaroo.....	8
Badger.....	12	Feet, Bird.....	3	Kennewick Man.....	27
Bat.....	10, 14, 33	Feet, Human.....	33, 40-41, 43	<i>Kenyanthropus platyops</i> .....	26
Bear.....	5, 8, 10-12, 14	Feet, Non-human Primate.....	21, 33	Kestrel.....	2, 4
Bear Claws.....	12	Femur, Human.....	22	Killdeer.....	4
Beaver.....	8, 12	Femur, Non-human Primate.....	22	Kiwi.....	2-3
Beaver.....	8	Ferret.....	10	Koala.....	8, 10
Bioarchaeology.....	14	Fetal, Non-human Primate.....	18	Komodo.....	12-13
Bird Eggs.....	3-4	Finch.....	4	Langur.....	17
Bird Feet.....	3	Flamingo.....	3	Legs, Bird.....	3
Bird Legs.....	3	Flicker.....	4	Legs, Bird.....	3
Bird Lifecasts.....	3	Flores Skull.....	27	Legs, Human.....	40-41
Bird Sets.....	3	Forensic Osteology.....	45	Lemur.....	10, 17-18, 23
Bird Skulls.....	3	Forensics.....	35, 45	Leopard.....	6, 11-12
Bird Talons.....	12	Fossil Cats.....	7	Life Casts, Bird.....	3
Bird Wings.....	3, 33	Fossil Claws.....	12	Life Casts, Coelacanth.....	13
Birds.....	2-4, 12, 14, 33	Fossil Dugong.....	5	Life Casts, Non-human Primate.....	21
Bluebird.....	4	Fossil Hominids.....	24-33	Lifecasts, Reptile.....	13
Bobcat.....	6, 8, 12	Fox.....	6, 8, 12, 14	Limbs, Bear.....	10
Bonobo.....	17-18, 21-23	Frog.....	13	Limbs, Dog.....	6
Brain, Chimpanzee.....	18	Gavial.....	13	Limbs, Fruit Bat Wing.....	11, 33
Brain, Human.....	43	Gibbon.....	17-18	Limbs, Horse.....	9
Bushbaby.....	23	Gila Monster.....	13	Limbs, Human Arms & Legs.....	33, 40
Bustard.....	2, 4	Giraffe.....	8	Limbs, Human Hands & Feet.....	33, 43
Canid Claws.....	12	Goat.....	14	Limbs, Marine Mammal.....	5
Capuchin.....	17, 22-23	Goldfinch.....	4	Limbs, Non-human Primate.....	21, 23
Capybara.....	8	Goose.....	4	Limbs, Wings.....	3, 11, 14, 33
Caracara, Northern Crested.....	2	Gorilla.....	17-18, 21-23	Lion.....	6-7, 11-12
Cardinal.....	3-4	Gull.....	3	Locomotion.....	19
Cassowary.....	3	Handouts.....	9	Loon.....	4
Cat Claws.....	12	Hands, Human.....	33, 40-41, 43	Loris.....	17
Cat Skulls.....	6-8	Hands, Non-human Primate.....	21, 33	“Lucy”.....	28
Catbird.....	4	Hawk.....	2-4, 12, 14	Lynx.....	12
Cats.....	6-12	Heron.....	3-4	Macaw.....	3
Chameleon.....	13	Hippopotamus.....	8, 11	<i>Machairodus giganteus</i> .....	7
Cheetah.....	6, 12	Hominids.....	24-33	Magpie.....	3
Chimpanzee.....	16-18, 20-23	<i>Homo antecessor</i> .....	26	Mamba.....	13
Claws.....	2, 12, 14	<i>Homo erectus</i> .....	26-27, 32	Manatee.....	5, 14
Clovis Point.....	32	<i>Homo ergaster</i> .....	22, 26, 31	Mandible.....	14, 18, 34, 44
Cobra.....	13	<i>Homo floresiensis</i> .....	27, 32-33	Mandrill.....	17, 21-23
Coelacanth.....	13	<i>Homo habilis</i> .....	26-27, 32	Marine Archaeology.....	14
Condor.....	2-4, 14	<i>Homo heidelbergensis</i> .....	26-27	Marmoset.....	17-18, 23
Cougar.....	6, 12	<i>Homo neanderthalensis</i> .....	26-27, 29, 32	Marsupials.....	8
Cougar.....	6	<i>Homo rudolfensis</i> .....	26	Maxilla.....	14, 18, 44
Cowbird.....	4	<i>Homo sapiens idaltu</i> .....	27	Meadowlark.....	4
Coyote.....	6, 8, 12, 14	<i>Homo sapiens, Oase</i> .....	27	Meerkat.....	10
Crane.....	3-4	<i>Homotherium</i> .....	7	Megalodon Shark.....	13

<i>Megantereon nihowanensis</i> .....	7	Sets, Egg .....	4	Skulls, Human Child.....	38
Mockingbird .....	4	Sets, Fossil Hominid .....	30, 33	Skulls, Human Fetal .....	39
Moloch .....	13	Sets, Human Child.....	42	Skulls, Human Medical Study.....	44
Monitor Lizard.....	13	Sets, Human Economy.....	42	Skulls, Mammal.....	8-9
Monkey .....	17-18	Sets, Human Femora.....	15	Skulls, Marine Mammal .....	5
Muntjac .....	9	Sets, Human Fetal .....	37	Skulls, Non-human Primate.....	17
Murrelet .....	4	Sets, Human Forensic.....	45	Skulls, Pathology.....	34
Museum of Man Collection.....	35	Sets, Human Skull .....	15, 38	Skulls, Quarter-scale.....	33
Narwhal.....	5	Sets, Intermembral .....	23	Skulls, Reptile .....	13
Neanderthal.....	22, 29, 32	Sets, Metatarsals .....	32	Skulls, Small Mammals .....	10
Ocelot .....	6	Sets, Pelvis & Femur.....	22	Skulls, Trauma .....	35
Okapi.....	8	Sets, Physical Therapy .....	42	Skunk.....	8, 14
Orangutan .....	17-18, 21-23	Sets, Primate Fetal .....	18	Sloth.....	10, 12
Osprey .....	2, 4	Sets, Primate Pectoral.....	18	<i>Smilodon fatalis &amp; populator</i> .....	7
Osteoarcheology .....	15	Sets, Primate Skulls .....	18	Snake .....	13
Osteoporosis .....	15	Sets, Zoology .....	8, 14	Snipe.....	3
Ostrich.....	3	Shark.....	11, 13	Solenodon .....	10
Otter .....	5, 14	Sheep.....	8	Spider Monkey .....	17, 22-23
Owl.....	2-4, 12, 14	Shingleback .....	13	Spoonbill .....	3
Paleopathology.....	15	Shrew.....	10	Squid.....	13
<i>Panthera zdanskyi</i> .....	7	Siamang.....	17-18, 21-23	Squirrel.....	8
<i>Paranthropus</i> .....	26-27, 32	<i>Sivapithecus indicus</i> .....	26	Stanford-Meyer Collection.....	34-35
Pathology, Human .....	15, 34	Skeleton, "Lucy" .....	28	Starling .....	4
Pathology, Zoological .....	14	Skeleton, Aye-aye.....	16-17	Stork .....	3
Peking Man.....	27	Skeleton, Bald Eagle .....	2	<i>T. rex</i> .....	11-12
Pelican.....	3	Skeleton, Black-footed Albatross .....	2	Talons .....	2, 12
Pelvis, Human .....	22	Skeleton, Bonobo .....	17	Tamarin .....	17-18
Pelvis, Non-human Primate.....	22	Skeleton, Capuchin .....	17	Tambaqui.....	13
Penguin .....	3-4	Skeleton, Chimpanzee .....	16-17, 20	<i>Tarbosaurus</i> .....	12
Physical Therapy.....	42	Skeleton, Dog.....	6	Tarsier.....	17-18
Pika .....	8, 10	Skeleton, Dolphin .....	5	Tasmanian Devil .....	8
Pitldown Man .....	26	Skeleton, Elephant Bird .....	2	Tasmanian Wolf .....	8
Platypus.....	5	Skeleton, Flying Fox.....	11	Teeth, Dental Anthropology.....	14, 39
Porcupine.....	12	Skeleton, Flying Lemur.....	11	Teeth, Hippo .....	8
Porpoise .....	5	Skeleton, Fossil Dugong.....	5	Teeth, Human .....	14, 39, 42
Postcranial, Fossil Hominid .....	32, 33	Skeleton, Golden Eagle.....	2	Teeth, Marine Mammal .....	5
Postcranial, Human Adolescent.....	41	Skeleton, Goliath Frog .....	13	Teeth, Reptile .....	13
Postcranial, Human Adult.....	33, 40, 42-43	Skeleton, Gorilla .....	17	Teeth, Shark .....	13
Postcranial, Human Child .....	41	Skeleton, Harpy Eagle .....	2	Teeth, Zoological .....	11
Postcranial, Human Pathology.....	34	Skeleton, <i>Homo ergaster</i> .....	31	Tiger .....	11
Postcranial, Human Trauma .....	35	Skeleton, Horse .....	9	Tiger.....	12
Postcranial, Non-human Primate .....	20-23, 33	Skeleton, Human .....	36-37	Tiger.....	6
Primates, Non-human .....	16-23, 33	Skeleton, Human Achondroplasia .....	34	Tools, Fossil Hominid .....	32
<i>Proconsul africanus</i> .....	26	Skeleton, Indri.....	17	Tortoise.....	13
Puffin .....	3-4	Skeleton, Kiwi .....	2	Toucan .....	3
Python .....	13	Skeleton, Komodo .....	13	Tuatara .....	13
Rabbit .....	8	Skeleton, Manatee .....	5	Turkey .....	4
Raccoon .....	8, 12, 14	Skeleton, Mandrill.....	17	Turtle .....	12-13
Raptors .....	2	Skeleton, Neanderthal.....	29	Tusks .....	5, 11
Raven.....	2-3, 12, 14, 33	Skeleton, Orangutan .....	17	Vertebra, Whale.....	5
Ray .....	13-14	Skeleton, Platypus.....	5	Vervet.....	17, 22-23
Reptile.....	13	Skeleton, Primate .....	16-17	Viper.....	13
Reptile Claws .....	12	Skeleton, Raven.....	2	Vulture .....	2, 4
Rhesus Macaque .....	17-18, 22-23	Skeleton, Rhesus.....	17	Walrus.....	5, 11
Rhinoceros.....	8	Skeleton, <i>Smilodon</i> , Sabertooth Cat.....	7	Warthog .....	9, 11
Ringtail.....	8	Skeleton, Short-faced Bear.....	10	Whale .....	5, 11, 14
Road Runner.....	3	Skeleton, Siamang.....	17	Whip-poor-will.....	4
Robin .....	3-4	Skeleton, Spider Monkey .....	17	Whorl Tooth Shark.....	13
Rock Rabbit.....	10	Skeleton, Vervet.....	17	Wing, Bird.....	3, 33
Rodents .....	8	Skeleton, <i>Xenosmilus</i> .....	7	Wing, Fruit Bat .....	11, 33
<i>Saadanius hijazensis</i> .....	27	Skulls, Advanced Anatomy.....	43	Wolf.....	6, 12, 14
Sabers.....	11	Skulls, Amphibian .....	13	Wolverine .....	9
Sabertooth Cats.....	7, 11	Skulls, Bears.....	10	Wombat .....	8
<i>Sahelanthropus tchadensis</i> .....	26	Skulls, Bird.....	2-3	Woodpecker.....	3, 14
Salamander .....	13	Skulls, Calvarium Cut.....	43	Wren.....	4
<i>Sarcosuchus imperator</i> .....	11	Skulls, Cat .....	6	<i>Xenosmilus hodsonae</i> .....	7
Scale Products.....	7, 10, 33	Skulls, Dog.....	6	<i>Zinjanthropus</i> .....	26
Sea Lion.....	5, 14	Skulls, Economy .....	8	Zooarchaeology.....	14
Seal .....	5, 14	Skulls, Egg-laying Mammals .....	5		
Secretary Bird .....	3	Skulls, Fossil Cats.....	7		
Sets, Bird.....	3	Skulls, Fossil Hominid .....	24, 26-27, 30-31, 33		
Sets, Claws & Talons.....	2, 12, 14	Skulls, Half-scale .....	33		
Sets, Comparative Evolution.....	33	Skulls, Human .....	15		
Sets, Dental .....	14, 39	Skulls, Human Adolescent .....	38		
Sets, Dog, Canid.....	6	Skulls, Human Adult.....	38		



**BONE CLONES, INC.**  
OSTEOLOGICAL REPRODUCTIONS

*"Only Mother Nature Does It Better"™*

**Skulls & Cranial Parts**  
**Skeletons & Postcranial Parts**  
**Sets, Life Casts, Scale & Sculpture**  
**Lesson Plans & Printable Handouts**

**Basic & Advanced Anatomy**  
**Forensics, Pathology, Trauma**  
**Paleontology, Bioarcheology**  
**Physical Anthropology**  
**Physical Therapy**  
**Primateology**  
**Veterinary**  
**Zoology**



**\$8<sup>95</sup>**

